



April 3, 2024

To: All Potential Bidders

From: Kelly Vu, Business Services Supervisor

Re: Addendum #1, IFB #: LED-01-24

The purpose of this addendum is to revise the components of the Invitation For Bid (IFB) for the Gate 1 LED Board Replacement. All terms and conditions of the original IFB remain unchanged.

---

Document to be revised as follows:

1. IFB, page 4, Part II, GENERAL INFORMATION, Section A, INVITATION FOR BID (IFB) :

**Original:** “The Board of Directors of the 32<sup>nd</sup> District Agricultural Association, in releasing this IFB, intends to award a contract for the Gate 1 Sign LED Board Replacement for the OC Fair & Event Center from **April 19, 2024 through April 18, 2025.**”

**Change To:** The Board of Directors of the 32<sup>nd</sup> District Agricultural Association, in releasing this IFB, intends to award a contract for the Gate 1 Sign LED Board Replacement for the OC Fair & Event Center from **June 1, 2024 through May 31, 2025.**

IFB, page 24 of 55, Attachment 3, Financial Proposal Bid Form

**Original:** April 19, 2024 – April 18, 2024

**Change To:** June 1, 2024 – May 31, 2024

2. IFB, page 5, Section E, Tentative Schedule

**Original:** Bid Opening 11:00 a.m., Friday, April 19, 2024

**Change To:** Bid Opening 11:00 a.m., Monday, April 22, 2024

**\*Please note that the Proposal Deadline 11:00 a.m. Friday, April 19, 2024 remain unchanged.**

**Important: It is the Bidder’s responsibility to confirm in writing receipt of all addenda issued to this IFB. Bidders may confirm through email, or acknowledge on the first page of Attachment 3, Financial Proposal Bid Form. See IFB, page 10, Addenda (Changes to the IFB).**

Thank you.

*-End Addendum #1-*



April 3, 2024

To: All Potential Bidders

From: Kelly Vu, Business Services Supervisor

Re: RFI #1, Q & A, IFB # LED-01-24

The purpose of this RFI (Request for Information) is to transmit "Questions and Answers" regarding the technical components of the IFB Gate 1 Sign LED Board Replacement. All terms and conditions of the original IFB notice remain unchanged.

---

## Questions and Answers

### Questions:

If you intend to submit a bid in response to this IFB, please send an email to [ifb@ocfair.com](mailto:ifb@ocfair.com) to confirm that you have received this RFI No. 1.

1. What is the estimated cost for this project?

**Answer:** \$110,000 - \$140,000

2. On page 16 of the attached PDF, the bottom sign elevation calls out "Part1 – Existing structure cover to be removed and replaced with new" "Part2- Existing D/F cabinet sign to be refurbished and relamped" "Part 3- New Fabricated flags, new fabricated canopy, new fabricated aluminum cap". Does all this scope of work need to be included in our bid? Or are these drawings just to show us what is existing?

**Answer:** The drawings provided on page 16 are for reference only to show you what is currently existing. Any mentioned scope of work in the drawing does not apply to this project/scope.

3. In the event that the cabinet needs to be modified, do we have to use aluminum framing or can it be steel? Steel is more structural than aluminum.

**Answer:** Aluminum, to be consistent with the current sign.

4. Will we have a chance to survey the existing sign prior to providing a quote? We would really like to see how the existing sign is attached to the structure and to verify all the as-build dimensions.

**Answer:** A survey of the existing sign will not be possible. However, the District includes herein, attachment 1, in PDF file, additional drawings of the sign. See Attachment 1 below.

5. Where can find the CD's for this project?

**Answer:** CD is not available. However, the District provide herein a PDFs file of additional drawings of the sign.

6. What is the current power for the current screen:

**Answer:** Current power is 120v. PDF of the current LED screen will be included in this RFI .

7. Do you have any as built's for the electrical and data?

**Answer:** See Attachment 1 for additional drawings of the sign.

8. How do you plan to control the new video screen?

**Answer:** LED screens must come with manufacturer-recommended operating software

9. Please confirm all of the items listed below are excluded from the scope,

a. New Electrical Installation

**Answer:** Excluded

b. New Structure

**Answer:** New structure is not necessary but a cabinet modification may be, see page 15 #3 Modify (sign cabinet if necessary)

c. New Power

**Answer:** Excluded

d. New Engineering Certification

**Answer:** Excluded

e. New Electrical Switch Gear or Distribution Equipment

**Answer:** Excluded

f. New Foundation

**Answer:** Excluded

g. New Hoist

**Answer:** Excluded

h. New Signal Conduit

**Answer:** Excluded

i. New Front-End Equipment

**Answer:** If this is a reference to LED control/operation then: the LED screen must come with manufacturer-recommended operating software

10. Is the LED board to be provided by the bidder or by OC Fair?

**Answer:** LED boards to be provided by the bidder

11. Is scope of work only for item 4 on page 16, or are any of the other items (1-3) to be included as well?

**Answer:** The drawings provided on page 16 are for reference only to show you what is currently existing. Any mentioned scope of work in the drawing does not apply to this project/scope.

The above information will be incorporated as part of the IFB requirements and contract. Please send an email to [rfp@ocfair.com](mailto:rfp@ocfair.com) for acknowledgment if you intend to bid on this project.

**Failure to acknowledge any RFI(s) and any Addendum(s) will result in disqualification.**

**Please email IFB@ocfair.com to acknowledge receiving RFI #1 if you intend to bid on this project.**

*-End RFI #1-*

RFI #1, Attachment A  
IFB Number: LED-01-24



# ORANGE COUNTY FAIR & EVENT CENTER

88 Fair Drive  
COSTA MESA, CA

February 11, 2010

**BID SET**

OC FAIR & EVENT CENTER

COSTA MESA, CA



Project Directory

**Project For:** Orange County Fair & Event Center  
88 Fair Drive  
Costa Mesa, CA 92626  
(714) 708-1549  
Attn: Jason Jacobsen

**Signage Consultant:** Continental Signs, Inc  
7541-D Santa Rita Circle  
Stanton, CA 90680  
(714) 894-2011, phone  
(714) 897-0860, fax

**City Planning:** City of Costa Mesa  
Building Division  
77 Fair Drive, 2nd Floor  
Costa Mesa, CA 92626  
(714) 754-5273

Table of Contents

Project Directory	A
Bid Portions/ Specifications	B
Existing Sign	C
Conceptual Mock-up	D
Overall Elevation Drawing	1. 1-1.2
Part 1 Detail Dwg	2. 1-2.2
Part 2 Detail Dwgs	3. 1-3.3
Part 4 Detail Dwg	4. 1
Attachment Details	5. 1-5.2



## Bid Portions/ Specifications: OC Fair & Event Center

PART

### 1 Structure Cover Portion

By Sign Vendor

- A) New aluminum covers with access doors and cut out area for message board controllers.
- B) Tex-coated and painting of top portions of structure covers.
- C) Non-illuminated FCO aluminum address numbers.
- D) Installation of new structure covers as per plan.

By OCF

- A) Remove old structure covers and discard.
- B) Remove old concrete pads and installion of new concrete pads per plan.
- C) Provide and install backer board, stone veneer and stone cap per plan.
- D) Address and correct any issues with the existing electrical transformer.

PART

### 2 Existing D/F Sign Cabinet Portion

By Sign Vendor

- A) Remove existing banners.
- B) Remove existing aluminum face braces
- C) Remove existing lamps & fixtures.
- D) Provide all new aluminum retainer system for new faces.
- E) Provide new 3/16" white Lexan® background faces.
- F) Provide & Install new lamps & fixtures.
- G) Install OCF provided trans. vinyl graphics on Lexan® faces.
- H) Install new retainers and faces into existing cabinet.

By OCF

- A) New trans. vinyl graphics for Lexan® backgrounds.

PART

### 3 New Canopy Portion

By Sign Vendor

- A) Manufacture and install after message board portion is complete new aluminum canopy as per plan.

By OCF

- A) Provide (if needed) additional crane rental for installation of new canopy.

PART

### 4 Message Board Portion

By Sign Vendor

- A) Remove existing Message Board and temporary removal of D/F top cabinet sign.
- B) Provide painted angle iron frame structure with aluminum cladding for mounting of Message Boards to existing pole structure as per plan.
- C) Install and hook up new OCF provided full color Message Boards onto existing pole structure. Reinstall top cabinet sign.

By OCF

- A) Provide (if needed) additional crane rental for removal of old Message Board and top cabinet sign and reinstallation of new Message Boards and top cabinet sign.



OC FAIR & EVENT CENTER

COSTA MESA, CA



EXISTING SIGN





NEW REFURBISHED SIGN (CONCEPTUAL)



OC FAIR & EVENT CENTER  
COSTA MESA, CA



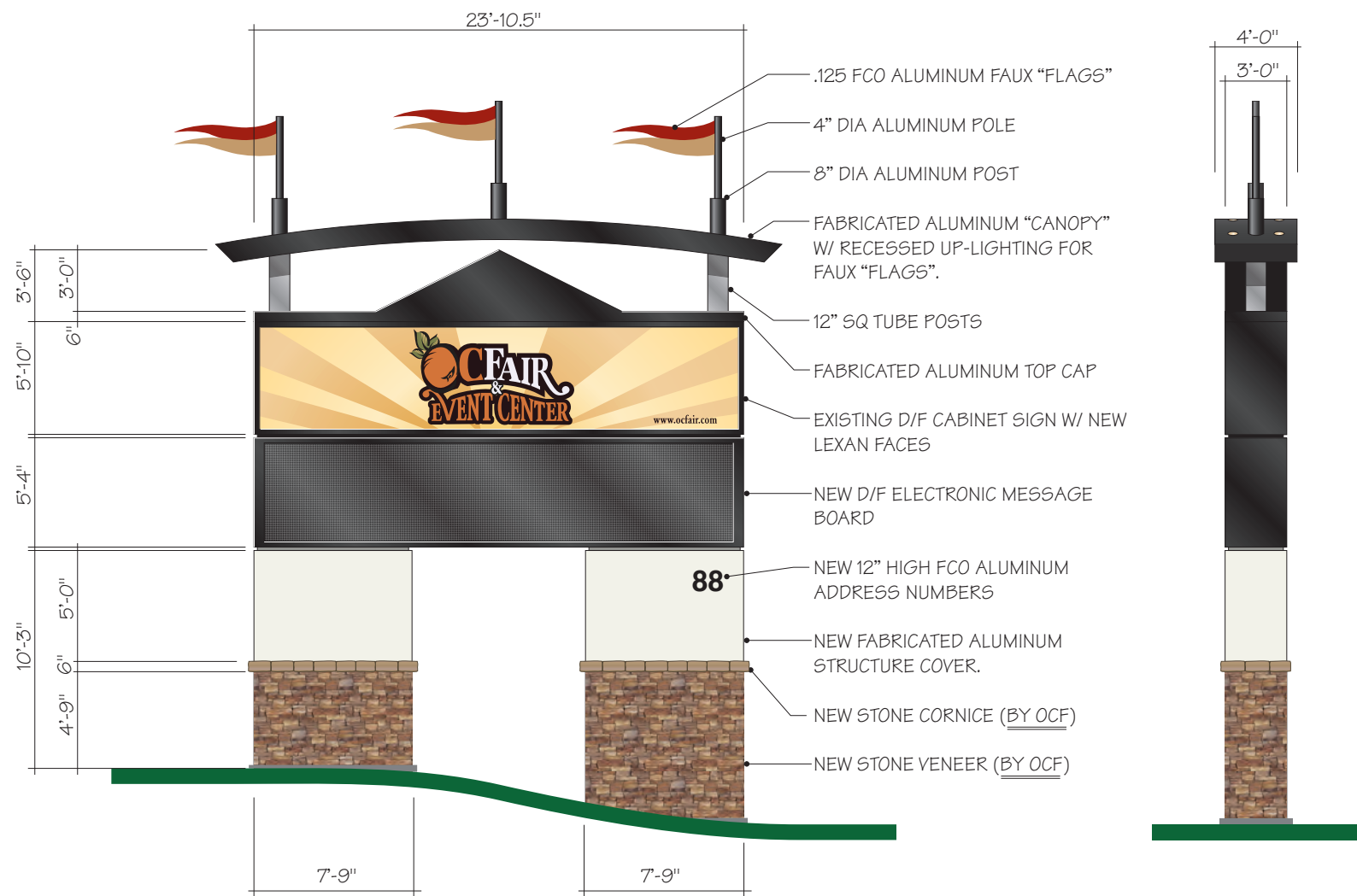
02/11/10

OC FAIR & EVENT CENTER  
COSTA MESA, CA

OVERALL ELEVATION DRAWING

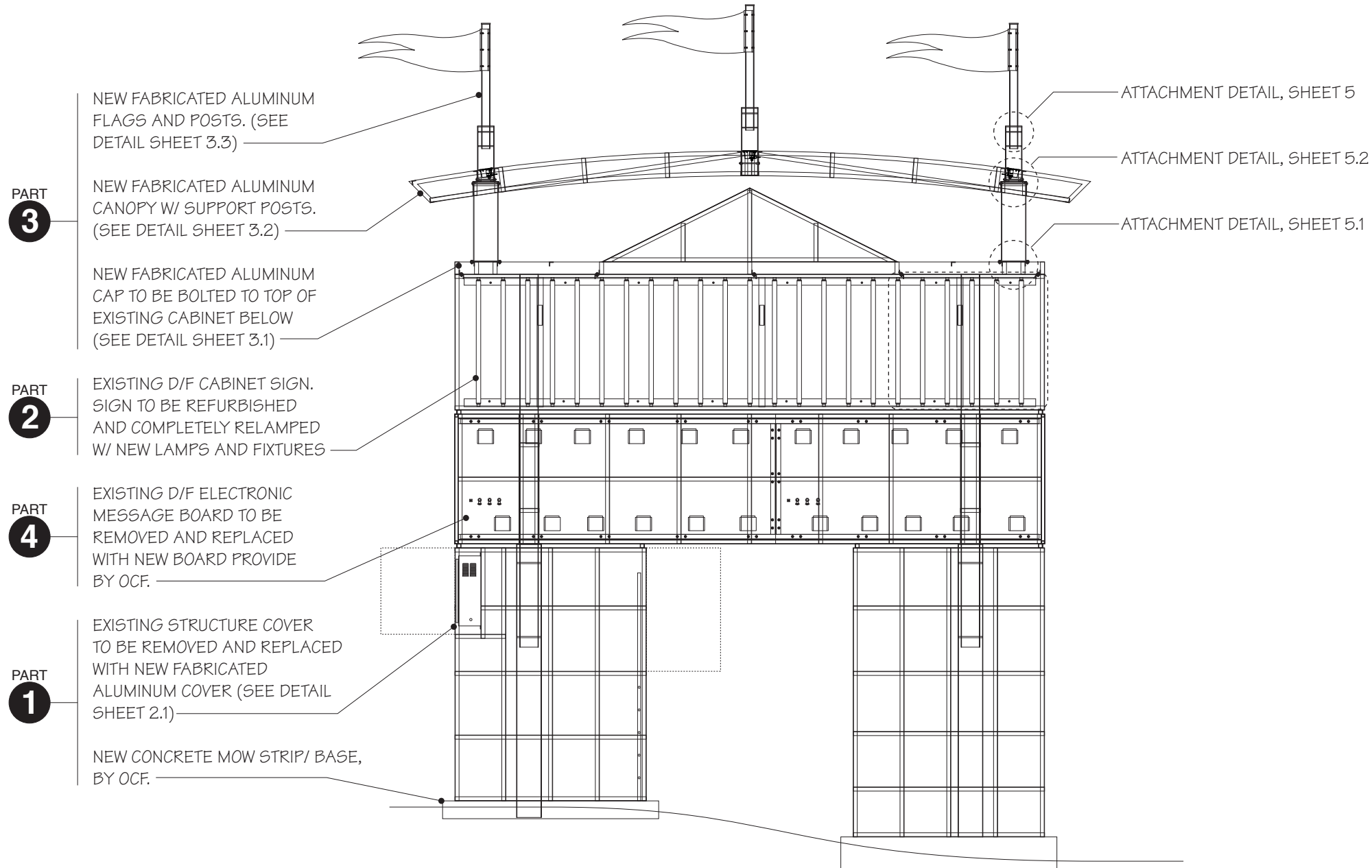
SHEET

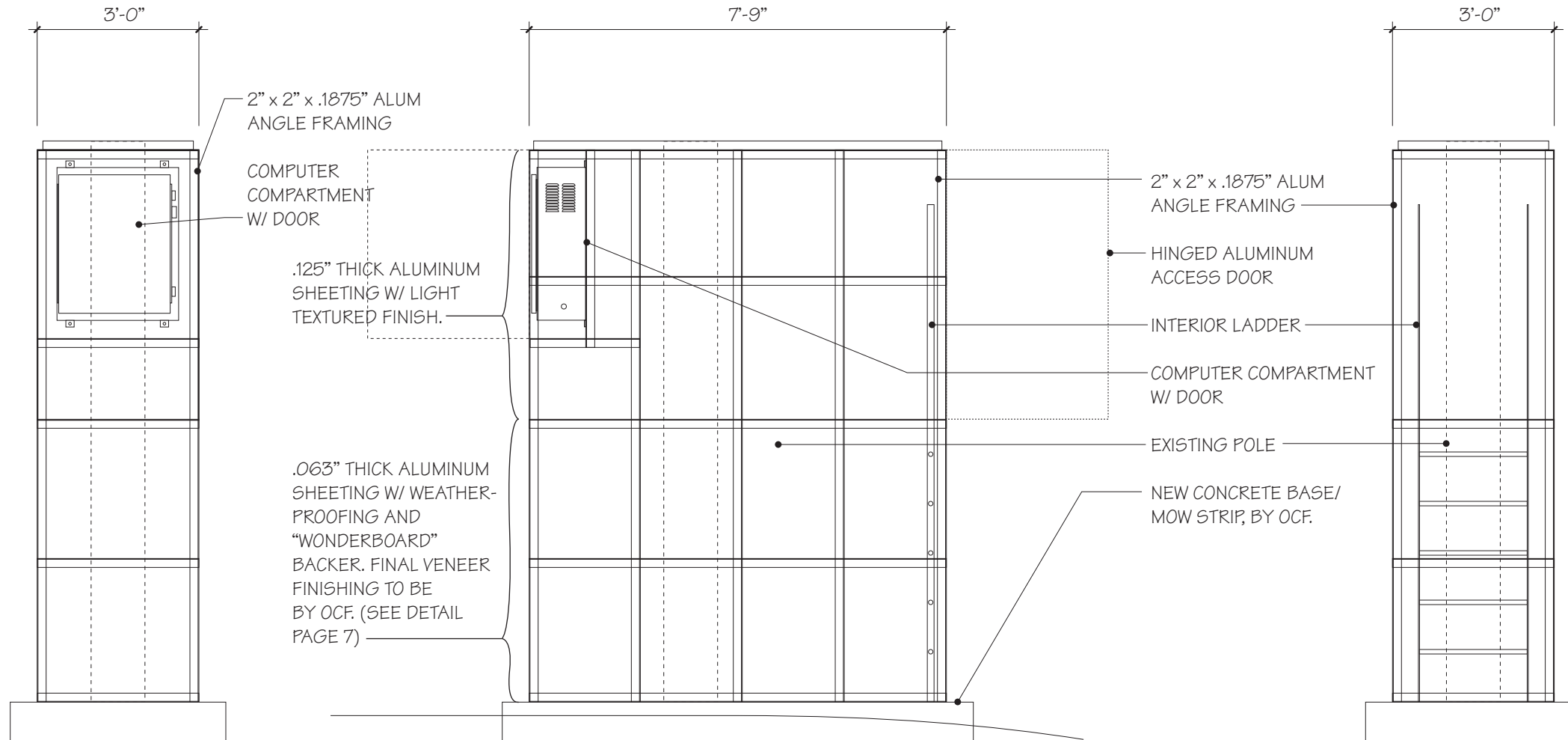
1.1



REFURBISH EXISTING DOUBLE-FACED FREESTANDING SIGN

Scale: 1/8"=1'-0"

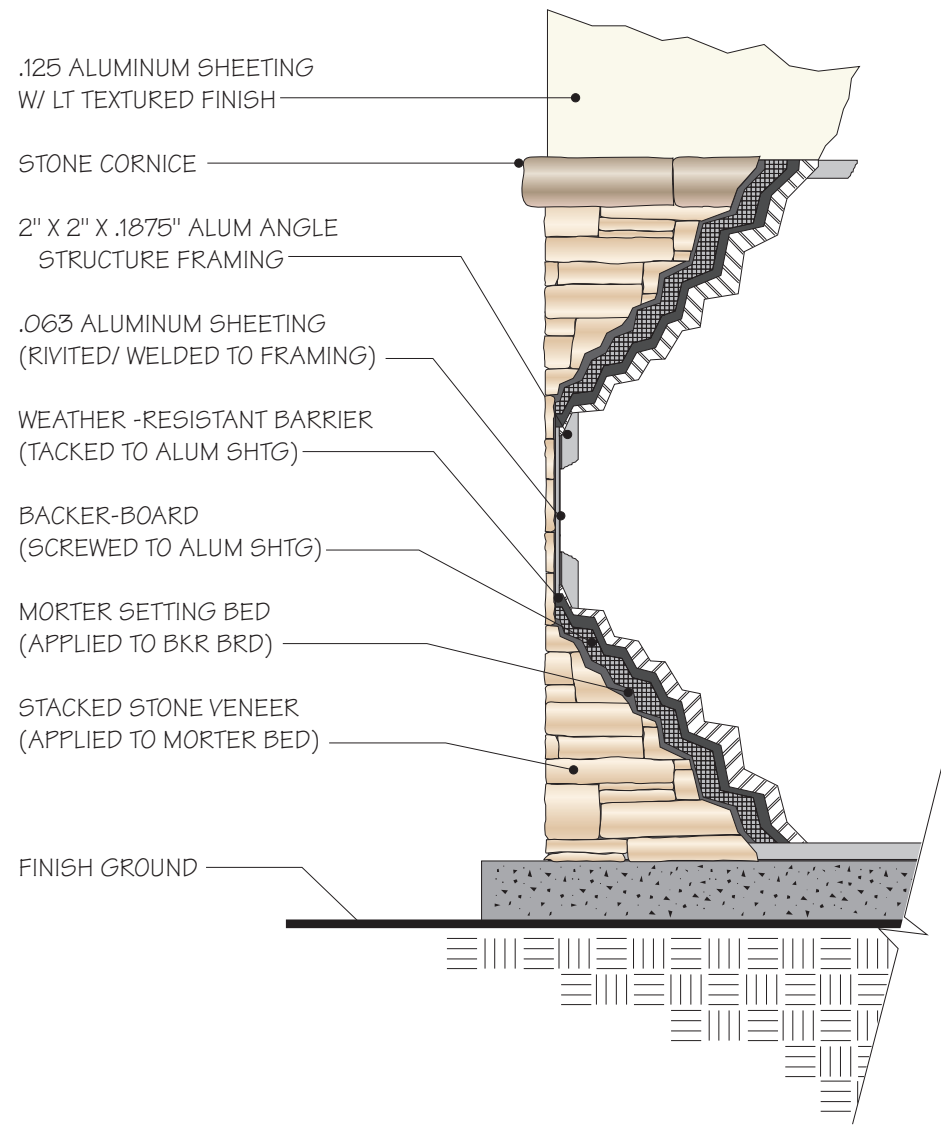




## STRUCTURE COVER DETAIL

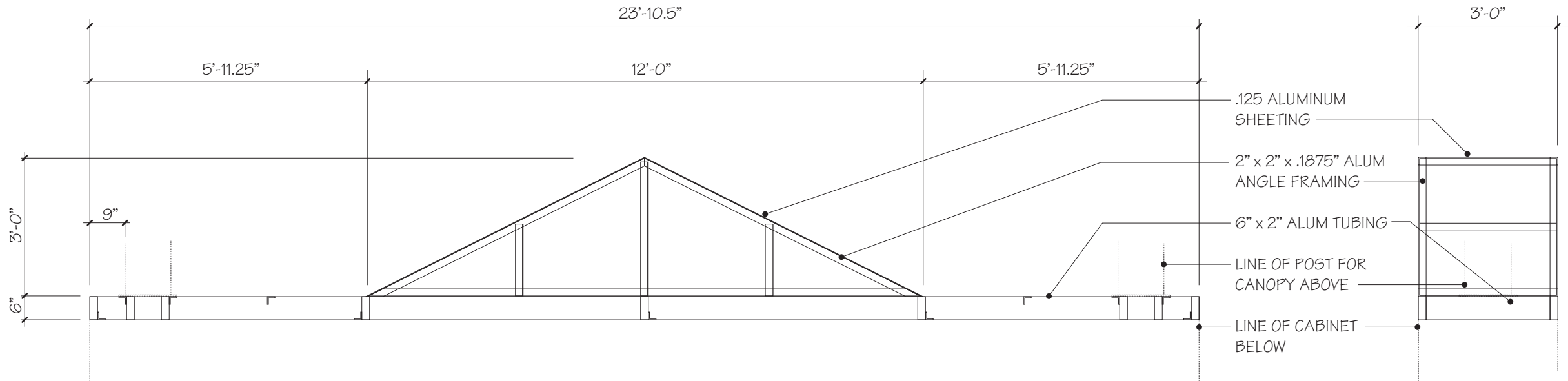
STREET SIDE COVER, SIM. (LESS INTERNAL ACCESS & EQUIPMENT)

Scale: 3/8"=1'-0"



**STRUCTURE COVER FINISH DETAIL**

Scale: 3/8"=1'-0"

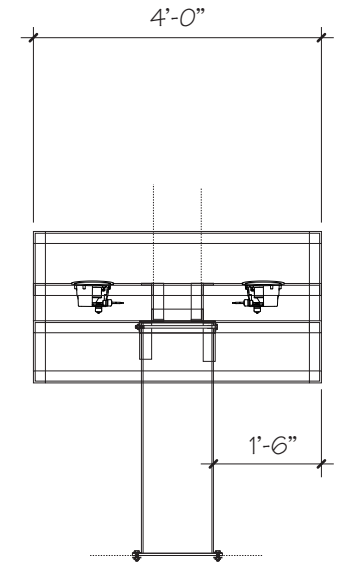
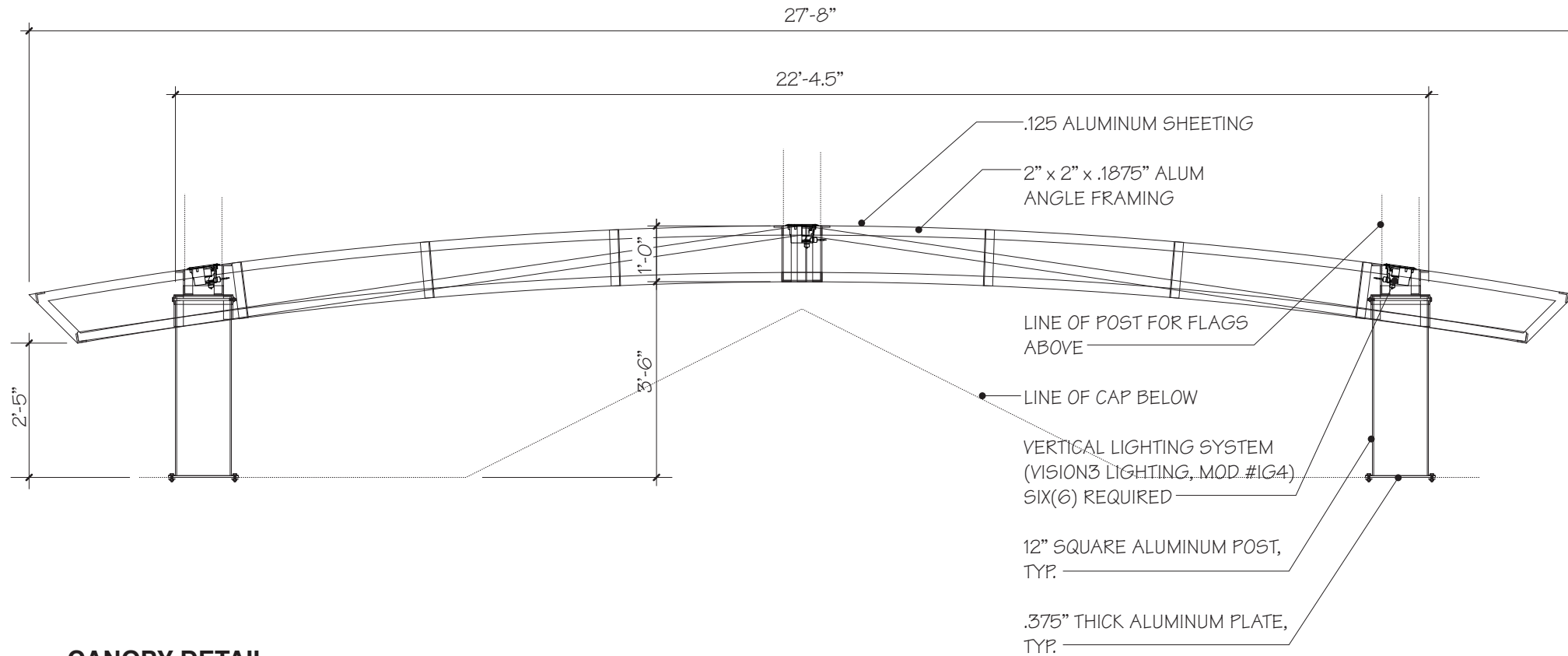
**CAP DETAIL**

Scale: 3/8"=1'-0"



02/11/10

OC FAIR & EVENT CENTER  
COSTA MESA, CA



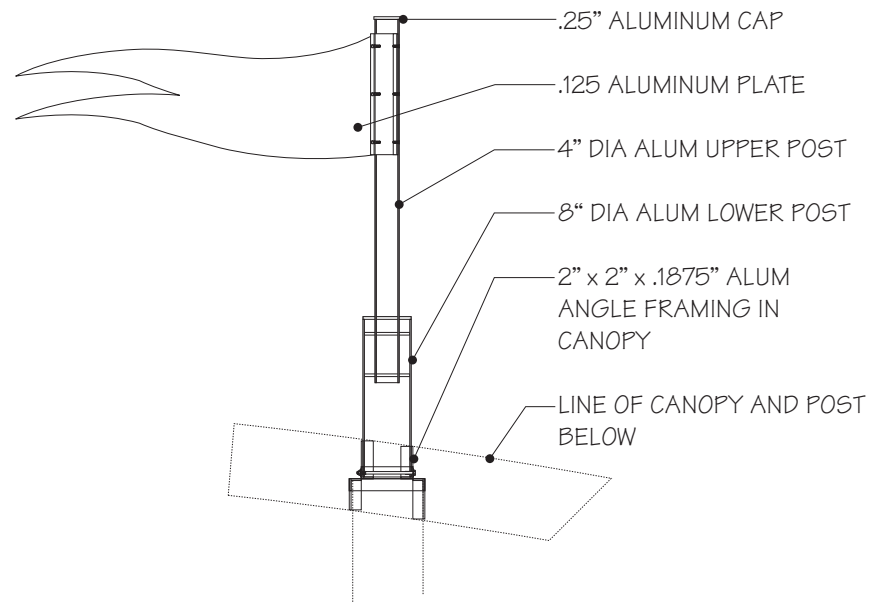
## CANOPY DETAIL

Scale: 3/8"=1'-0"

PART 3

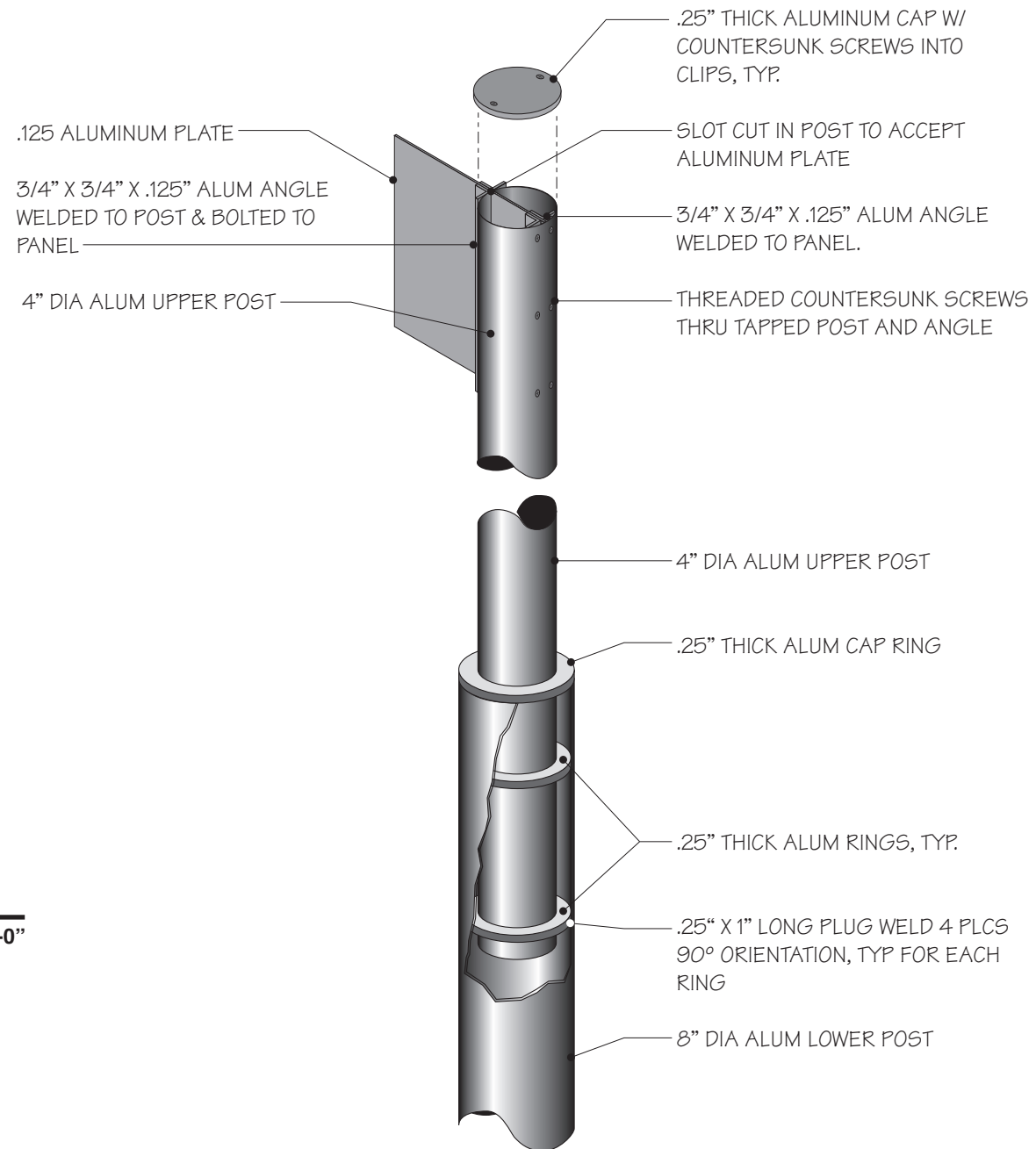
SHEET

3.2

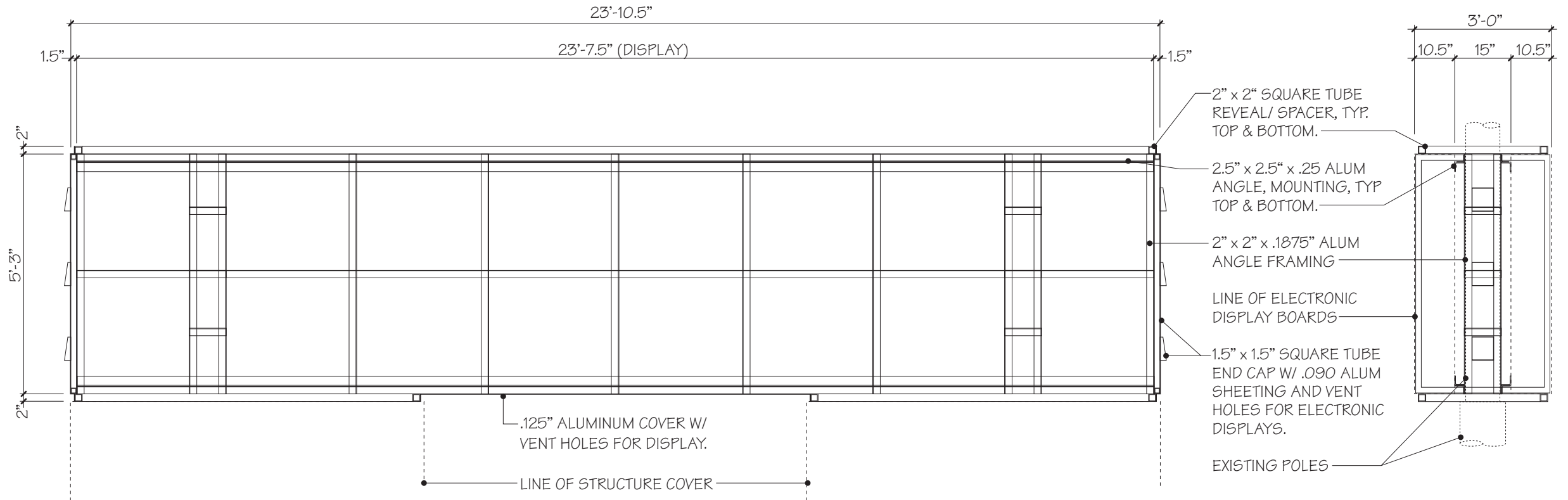


### FLAG DETAIL - THREE(3) REQ

Scale: 3/8"=1'-0"

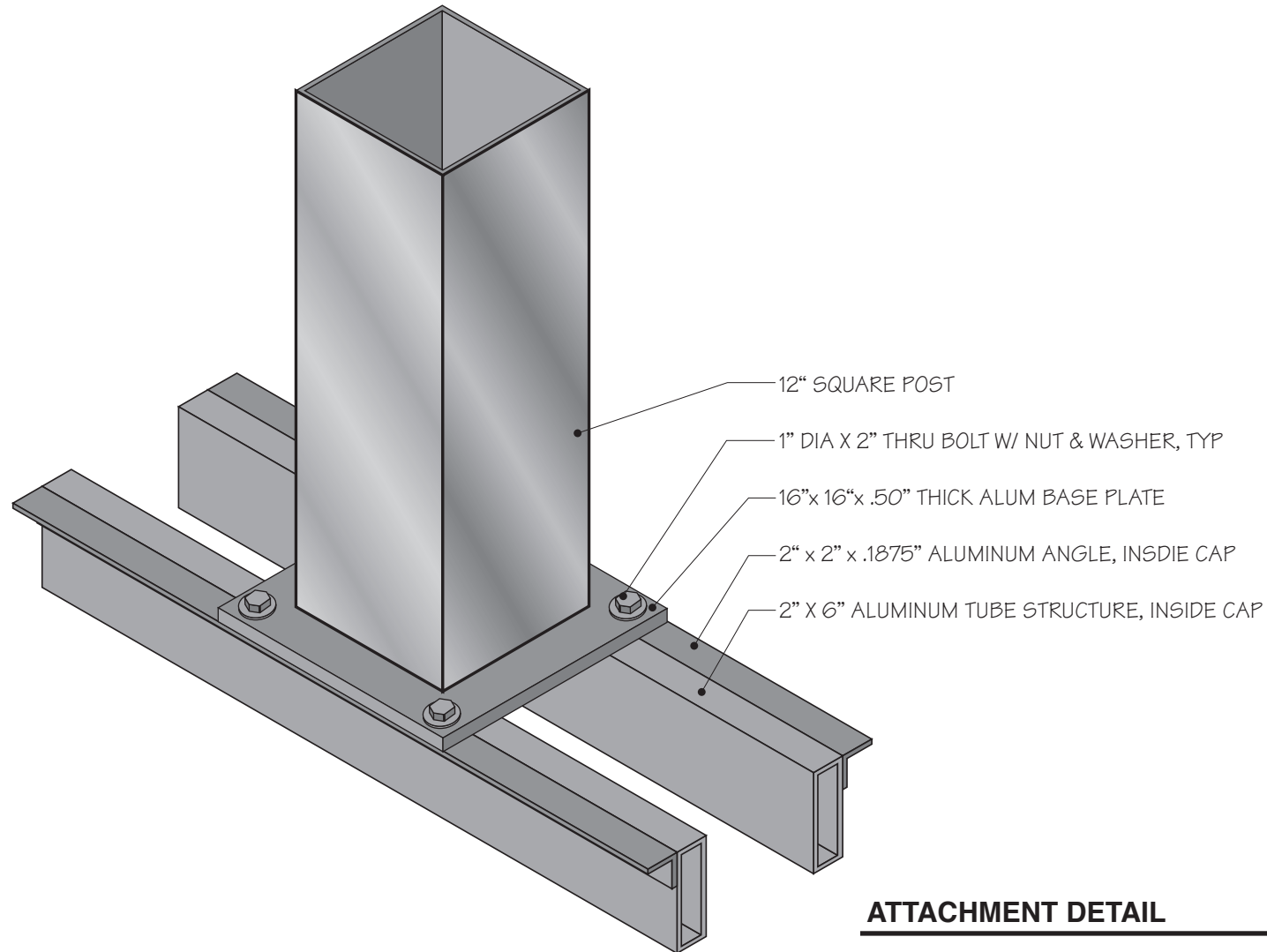




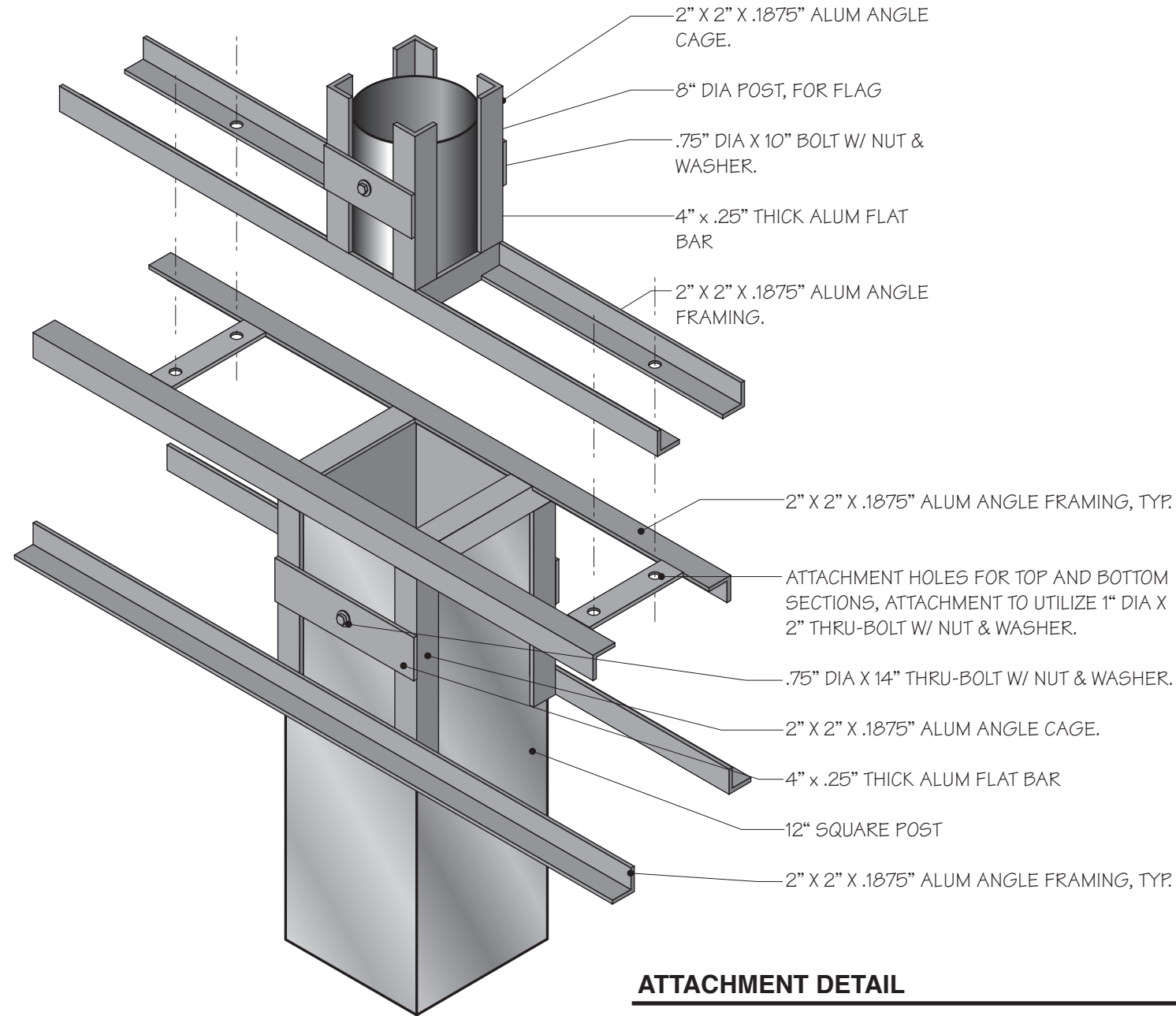


## ELECTRONIC DISPLAY SUPPORT STRUCTURE

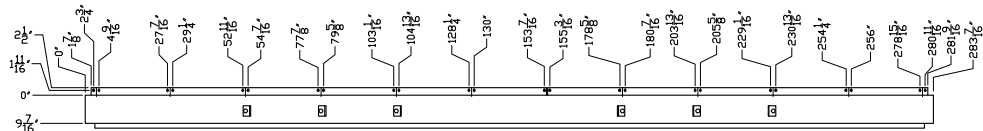
Scale: 3/8"=1'-0"



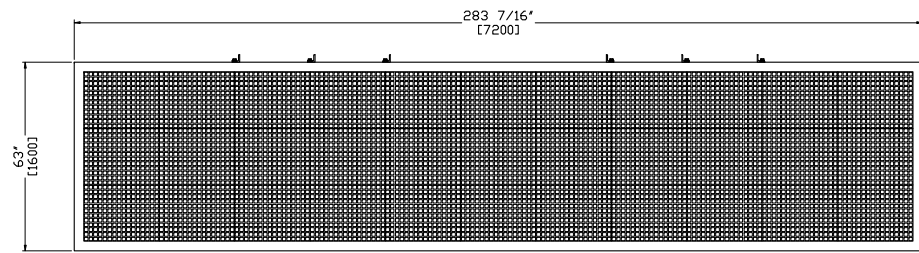
**ATTACHMENT DETAIL**



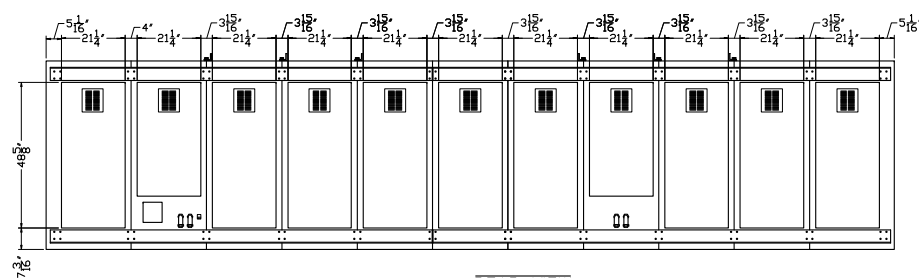
**ATTACHMENT DETAIL**



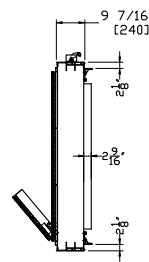
TOP VIEW



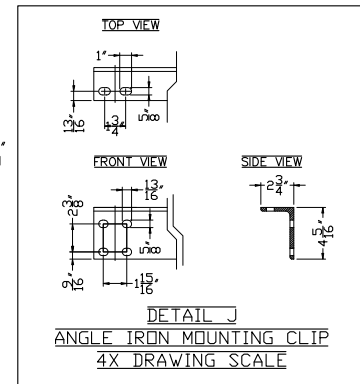
FRONT VIEW



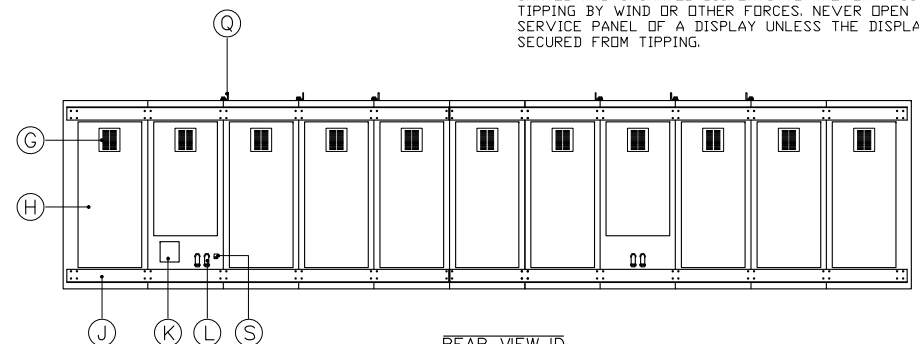
REAR VIEW



SIDE VIEW



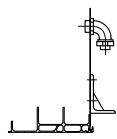
DETAIL J  
ANGLE IRON MOUNTING CLIP  
4X DRAWING SCALE



REAR VIEW ID

GENERAL NOTES

1. ALL DIMENSIONS ARE IN FT-IN, ALTERNATIVE UNITS WHEN SPECIFIED ARE IN [mm]
2. UNLESS OTHERWISE SPECIFIED ALL EXTERIOR PARTS ARE FINISHED BLACK, UNLESS CUSTOM COLOR WAS SPECIFIED AT TIME OF ORDER.
3. BACK PANEL FINISH GRAY, UNLESS CUSTOM COLOR WAS SPECIFIED AT TIME OF ORDER.
4. DISPLAY PERIMETER IS CONSTRUCTED OF ALUMINUM EXTRUSION, ALL OTHER PANELS ARE CONSTRUCTED OF STEEL OR ALUMINUM.
5. ALL FACE PANELS HINGE OPEN FROM BOTTOM TO ~60°.
6. OPTEC DISPLAYS IS NOT RESPONSIBLE FOR THE MAIN ELECTRICAL DISCONNECT.
7. OPTEC DISPLAYS IS NOT RESPONSIBLE FOR THE MOUNTING HARDWARE OR THE INTEGRITY OF THE STRUCTURE TO WHICH THE DISPLAY IS MOUNTED.
8. EYEBOLTS, WHEN PROVIDED, MAY NOT BE USED FOR PERMANENT INSTALLATION.
9. DISPLAY MUST BE MOUNTED TO SUPPORTING STRUCTURE USING THE PROVIDED ANGLE IRON MOUNTING CLIPS.
10. DISPLAY IS REAR VENTILATED. TO MAINTAIN WARRANTY COVERAGE, AIR MUST BE ALLOWED TO FLOW UNOBSTRUCTED FROM ALL AIR VENTS AND AMBIENT AIR TEMPERATURE ON ALL SURFACES MUST BE BETWEEN -22°F AND 130°F WHILE SIGN IS POWERED. FOR PROPER AIRFLOW, MAINTAIN MINIMUM 1.5" CLEARANCE BETWEEN BACK OF DISPLAY AND WALLS.
11. DURING TRANSPORT, THE BOTTOM OF THE DISPLAY MUST BE SUPPORTED AT EACH END AND ADDITIONAL SUPPORTS DISTRIBUTED ALONG LENGTH OF CABINET AT INTERVALS NOT TO EXCEED 5 FEET.
12. EYEBOLTS, WHEN PROVIDED, ARE DESIGNED TO LIFT ONLY THE INDIVIDUAL DISPLAY CABINET AND MAY NOT BE USED TO LIFT THE DISPLAY COMBINED WITH ANY ADDITIONAL STRUCTURES.
13. UNSECURED DISPLAYS ARE NOT STABLE. ALWAYS SECURE BOTH CRATED AND UNCRATED DISPLAYS TO PREVENT ACCIDENTAL TIPPING BY WIND OR OTHER FORCES. NEVER OPEN ANY SERVICE PANEL OF A DISPLAY UNLESS THE DISPLAY IS SECURED FROM TIPPING.



SIDE VIEW

DETAIL L  
1" ANGLE CONDUIT CLIP  
3X DRAWING SCALE

APPROXIMATE WEIGHTS PER FACE      2200 lbs.

CALL OUT IDENTIFICATION TABLE	
ITEM	DESCRIPTION
G	VENTILATION EXHAUST
H	REAR SERVICE ACCESS DOOR
J	ANGLE IRON MOUNTING CLIP - SEE DETAIL J
K	COMMUNICATIONS RELAY CENTER
L	1" ANGLE CONDUIT - SEE DETAIL L
S	GROUNDING LUG
Q	LIFTING BRACKETS - SEE DETAIL Q

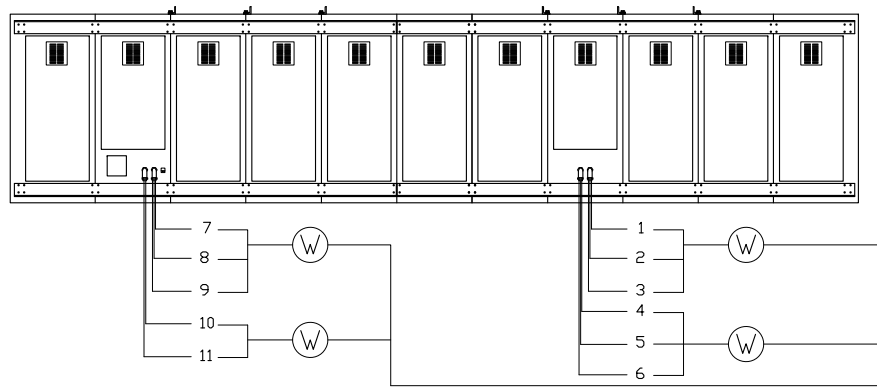
REV.	DATE	DESCRIPTION	BY	APPR

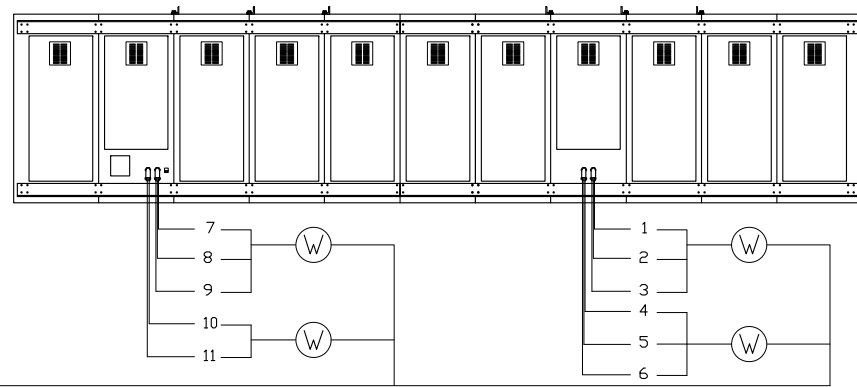
		COPYRIGHT 2006 OPTEC DISPLAYS, INC. ALL RIGHTS RESERVED. UNAUTHORIZED REPRODUCTION AND DISTRIBUTION PROHIBITED	
DISPLAY MODEL		2040-R2G2B1-72x352-MS	
DRAWING NUMBER		2040-R2G2B1-72x352-MS-2000	
REFERENCE		Ref# Joe Artinger/Continental Signs-I	
DESIGNED BY	Gaf	SCALE/SHEET SIZE	1:48 / B-Size
DRAWN BY	Gaf	TOLERANCE	± 1/4"
DATE	2009-Apr-08	UNITS	INCHES [mm]
PAGE	1 OF 4	REVISION	2.0

# ELECTRICAL RISER DIAGRAM

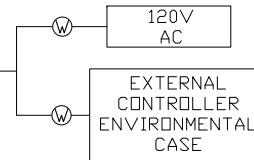
MASTER



SLAVE



POWER DISCONNECT /DISTRIBUTION PROVIDED BY OTHERS, SEE POWER REQUIREMENTS TABLE



MASTER

POWER REQUIREMENTS PER SINGLE FACE				
CIRCUIT	120 VOLT DOMESTIC		240 VOLT DOMESTIC	
	WATTS	AMPS	WATTS	AMPS
1~11	1032W	9.4A		
INPUT VOLTAGE FOR DISPLAY MUST BE SPECIFIED AT TIME OF ORDER.				

MAXIMUM POWER CONSUMPTION FOR BOOTING UP	11354W	103.2A
AVERAGE RUNNING POWER CONSUMPTION	3974W	36.1A

SLAVE

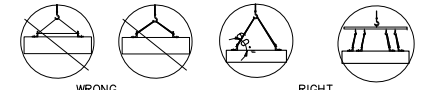
POWER REQUIREMENTS PER SINGLE FACE				
CIRCUIT	120 VOLT DOMESTIC		240 VOLT DOMESTIC	
	WATTS	AMPS	WATTS	AMPS
1~11	1032W	9.4A		
INPUT VOLTAGE FOR DISPLAY MUST BE SPECIFIED AT TIME OF ORDER.				

MAXIMUM POWER CONSUMPTION FOR BOOTING UP	11354W	103.2A
AVERAGE RUNNING POWER CONSUMPTION	3974W	36.1A

CABLE ID	OPTEC P/N
W CABLE, POWER FEEDER, CUSTOMER PROVIDED	N/A

## NOTES

- POWER FEEDERS SIZED AS NEEDED, BY CUSTOMER. ALL WIRING TO MEET NEC AND LOCAL ELECTRICAL CODES.
- ALL DISPLAYS MUST BE GROUNDED PER ARTICLE 250 AND 600 OF THE NATIONAL ELECTRICAL CODE.
- IMPROPER ELECTRICAL INSTALLATION WILL RESULT IN TERMINATION OF WARRANTY COVERAGE.
- UNLESS OTHERWISE SPECIFIED AT TIME OF ORDER, ALL OPTEC DISPLAY PRODUCTS ARE DESIGNED FOR 120 VOLT DOMESTIC POWER SOURCES.
- ALL DATA & SIGNAL CABLES, UNLESS OTHERWISE SPECIFIED, SHOULD BE IN CONDUIT SEPARATE FROM POWER FEEDERS.
- EACH POWER CIRCUIT SUPPLYING THE DISPLAY MUST BE DEDICATED TO THE DISPLAY AC CORD ONLY.NEC SECTION 600.5 (A).

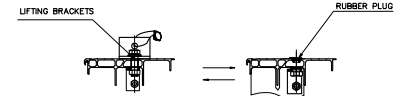


WRONG

RIGHT

## WARNING

- DAMAGE TO FRAME CAN OCCUR IF PROPER RIGGING TECHNIQUES ARE NOT USED. ALWAYS ENSURE THAT THE LIFTING ANGLE IS GREATER THAN 60 DEGREES. NEVER USE A SINGLE LIFTING STRAP BETWEEN TWO OR MORE LIFTING POINTS.
- TO PREVENT WATER DAMAGE TO ELECTRONICS :
  - DO NOT DRILL OR TAP INTO TOP OF CABINET.
  - WHEN LIFTING BRACKETS ARE PROVIDED, SEAL ALL HOLES ON TOP OF CABINET WITH RUBBER PLUG.



SEAL ALL HOLES ON TOP OF CABINET WITH RUBBER PLUG WHEN REMOVE THE LIFTING BRACKETS.

DETAIL Q  
LIFTING BRACKETS

REV.	DATE	DESCRIPTION	BY	APPR
<div> <p>COPYRIGHT 2006 OPTEC DISPLAYS, INC. ALL RIGHTS RESERVED. UNAUTHORIZED REPRODUCTION AND DISTRIBUTION PROHIBITED</p> </div>				
DISPLAY MODEL		2040-R2G2B1-72x352-MS		
DRAWING NUMBER		2040-R2G2B1-72x352-MS-2000		
REFERENCE		Ref# Joe Artinger/Continental Signs-I		
DESIGNED BY		Gaf	SCALE/SHEET SIZE	1:48 / B-Size
DRAWN BY		Gaf	TOLERANCE	± 1/4"
DATE		2009-Apr-08	UNITS	INCHES [mm]
PAGE		2 OF 4	REVISION	2.0

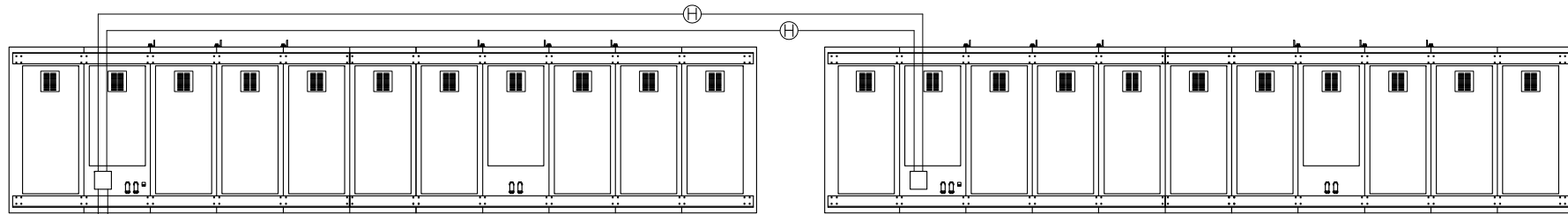
# NOTES

1. POWER FEEDERS SIZED AS NEEDED, BY CUSTOMER. ALL WIRING TO MEET NEC AND LOCAL ELECTRICAL CODES.
2. ALL DISPLAYS MUST BE GROUNDED PER ARTICLE 250 AND 600 OF THE NATIONAL ELECTRICAL CODE.
3. IMPROPER ELECTRICAL INSTALLATION WILL RESULT IN TERMINATION OF WARRANTY COVERAGE.
4. UNLESS OTHERWISE SPECIFIED AT TIME OF ORDER, ALL OPTEC DISPLAY PRODUCTS ARE DESIGNED FOR 120 VOLT DOMESTIC POWER SOURCES.
5. ALL DATA & SIGNAL CABLES, UNLESS OTHERWISE SPECIFIED, SHOULD BE IN CONDUIT SEPARATE FROM POWER FEEDERS.
6. EACH POWER CIRCUIT SUPPLYING THE DISPLAY MUST BE DEDICATED TO THE DISPLAY AC CORD ONLY.NEC SECTION 600.5 (A).

## DATA RISER DIAGRAM

MASTER

SLAVE



TEMPERATURE  
LIGHT SENSOR &  
RADIATION SHIELD  
ASSEMBLY

PORT 1  
PORT 2  
PORT 3  
PORT 4  
PORT 5  
PORT 6  
PORT 7  
PORT 8  
TEMPERATURE  
& LIGHT SENSOR  
COM  
DVI IN  
120V AC  
DD SYSTEM BOX  
OPTEC P/N  
24VDDSYSTEMBOXA.0

NETWORK PORT  
232 PORT  
DVI OUT  
120V AC

DISPLAY CONTROLLER

COMMUNICATIONS  
DEVICE  
SEE DETAIL P

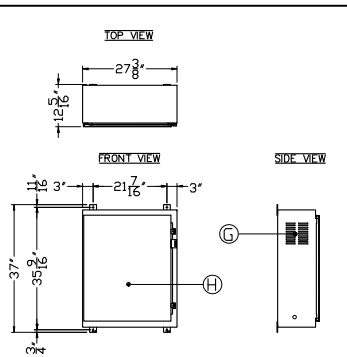
3.5A

0.35A

120V  
AC

120V  
AC

EXTERNAL CONTROLLER  
ENVIRONMENTAL CASE



ITEM	DESCRIPTION
G	VENTILATION EXHAUST
H	ACCESS DOOR

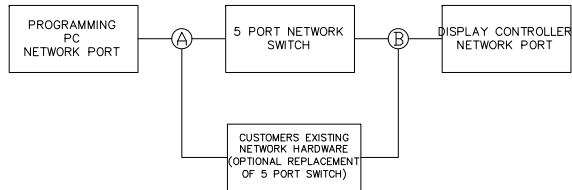
DETAIL R  
EXTERNAL CONTROLLER  
ENVIRONMENTAL CASE  
IX DRAWING SCALE

	CABLE ID	OPTEC P/N
H	CABLE, 100 FT, RJ-45, DISPLAY SIGNAL	25H08081D300000BZZ
I	CABLE, 6 FT, 9 PIN M-F, RS-232	N/A
J	CABLE, 6 FT, DVI M-M, VIDEO SIGNAL	90157
K	CABLE VARIES - SEE COMM OPTIONS DETAIL	N/A
L	CABLE, 25FT, INCLUDED WITH RADIATION SHIELD TEMP SENSOR ASSEMBLY	24TEMPER/PHOTO3.1Z

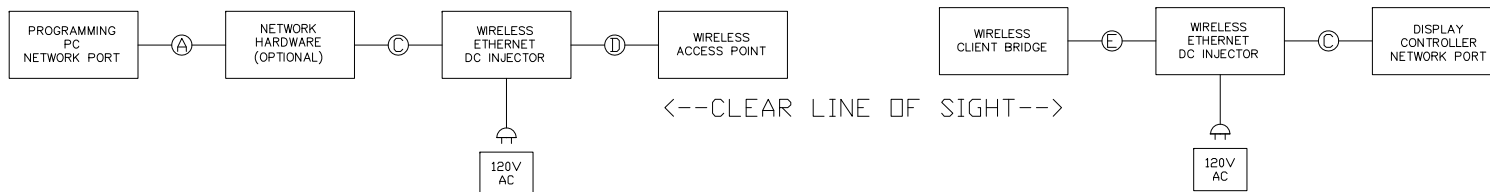
REV.	DATE	DESCRIPTION	BY	APPR
		COPYRIGHT 2006 OPTEC DISPLAYS, INC. ALL RIGHTS RESERVED. UNAUTHORIZED REPRODUCTION AND DISTRIBUTION PROHIBITED		
		DISPLAY MODEL 2040-R2G2B1-72x352-MS		
		DRAWING NUMBER 2040-R2G2B1-72x352-MS-2000		
		REFERENCE Ref# Joe Artinger/Continental Signs-I		
		DESIGNED BY Ggf SCALE/SHEET SIZE 1:48 / B-Size		
		DRAWN BY Ggf TOLERANCE ± 1/4"		
		DATE 2009-Apr-08 UNITS INCHES (mm)		
		PAGE 3 OF 4 REVISION 2.0		

DETAIL P - COMM. OPTIONS  
REFER TO OPTION ORDERED FOR DISPLAY

CABLED ETHERNET (LAN/WAN) OPTION



WIRELESS ETHERNET OPTION



FIBER OPTIC CONVERTER OPTION



CABLE ID	OPTEC P/N
A CABLE, CAT-5, RJ-45, CUSTOMER PROVIDED	N/A
B CABLE, ORDER TO LENGTH, CAT-5, RJ-45	N/A
C CABLE, 6FT, CAT-5, RJ-45	92CAT5PAT7FZ1.0
D CABLE, 175FT, OUTDOOR, CAT-5, RJ-45 TO WEATHERPROOF CONNECTOR	92CAT5WP175Z1.0
E CABLE, 25FT, OUTDOOR, CAT-5, RJ-45 TO WEATHERPROOF CONNECTOR	92CAT5WP25ZZ1.0
F CABLE, ORDER TO LENGTH, MULTI-MODE FIBER 62.5/125μm,ST CONNECTOR	N/A

REV.	DATE	DESCRIPTION	BY	APPR
		<b>OPTEC DISPLAYS, INC.</b>		
		COPYRIGHT 2006 OPTEC DISPLAYS, INC. ALL RIGHTS RESERVED. UNAUTHORIZED REPRODUCTION AND DISTRIBUTION PROHIBITED		
DISPLAY MODEL		2040-R2G2B1-72x352-MS		
DRAWING NUMBER		2040-R2G2B1-72x352-MS-2000		
REFERENCE		Ref# Joe Artinger/Continental Signs-1		
DESIGNED BY		Ggf	SCALE/SHEET SIZE	1:36 / B-Size
DRAWN BY		Ggf	TOLERANCE	± 1/4"
DATE		2009-Apr-08	UNITS	INCHES (mm)
PAGE		4 OF 4	REVISION	2.0