



COSTA MESA, CA

EVENT SPACE SALES



OCFAIR.COM

OVERVIEW

OC Fair & Event Center is a 150-acre event venue that hosts over 150 events and attracts approximately 4.3 million visitors annually. Our versatile multi-use property can be transformed to fit a variety of events from small private events to large-scale trade shows and festivals. Our full-service capabilities cover concessions, security, audio/visual, on-site camping and more.

In addition to great year-round weather in sunny Southern California, we are also conveniently located nearby numerous lodging options, restaurants, shopping, major freeways (55 and 405) and John Wayne Airport.

AT A GLANCE

150 acres

157,000
sq. ft.
unique event
space

24+ indoor
and outdoor
options

Conventions, expos and trade shows
Corporate events and fundraisers
Private events
Seasonal events
Concerts and festivals

Weddings
National touring events
Meetings
Pop-up events
Holiday parties

Contact sales@ocfair.com or 415-705-5542 for inquiries or to schedule a tour.

AREA MAP



PROPERTY MAP



LEGEND

EXHIBIT HALLS

- 1 Costa Mesa Building
- 2 Santa Ana Pavilion
- 3 Huntington Beach Building
- 4 Anaheim Building
- 5 OC Promenade
- 6 Las Alamitos Building
- 7 Livestock

OUTDOOR SPACES

- 8 Action Sports Arena
- 9 Main Mall
- 10 Park Plaza
- 11 Festival Fields
- 12 Festival Asphalt
- 13 Crafters Village
- 14 Campground

- 15 Courtyard
- 16 Country Meadows
- 17 Pacific Amphitheatre
- 18 Centennial Farm
- 19 Heroes Hall
- 20 Table of Dignity

MEETING & MULTIPURPOSE AREAS

- 21 Plaza Pacifica Lobby
- 22 Millennium Barn
- 23 Baja Blues Bar & Restaurant
- 24 The Hangar

OFFICE BUILDINGS

- 25 Security
- 26 Box Office
- 27 Administration
- 28 Event Operations
- 29 Equestrian Center
- 30 Spectra
- 31 Silo Building

OTHER

- R Restrooms

EVENT SPACE

OVERVIEW

EXHIBIT HALLS

West Main Mall

- Costa Mesa Building
- Santa Ana Pavilion
- Huntington Beach Building

East Main Mall

- Anaheim Building
- OC Promenade
- Los Alamitos Building

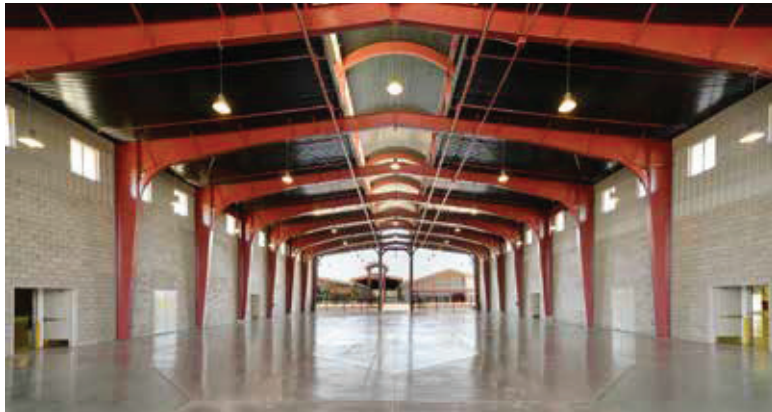
The Hangar

INDOOR SPACES

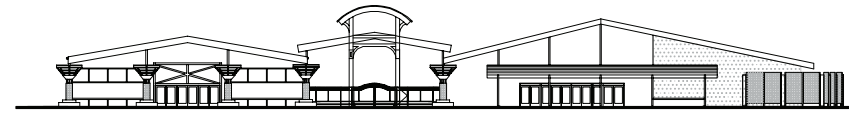
- Baja Blues Bar & Restaurant
- Millennium Barn
- Plaza Pacifica Lobby

OUTDOOR SPACES

- Action Sports Arena
- Campground
- Country Meadows
- Crafters Village
- Festival Fields (Asphalt)
- Festival Fields (Grass)
- Heroes Hall Courtyard
- Main Mall
- Pacific Amphitheatre
- Parking Lots B-I
- Park Plaza
- Plaza Pacifica



WEST MAIN MALL



HUNTINGTON BEACH

19,572 Square Feet
Climate-Controlled Exhibit Hall

SANTA ANA PAVILION

16,325 Square Feet
Outdoor Covered Space

COSTA MESA

34,025 Square Feet
Climate-Controlled Exhibit Hall

FLOOR:

COSTA MESA
120' x 300' Hi-Gloss Concrete

SANTA ANA PAVILION
55' x 305' Concrete

HUNTINGTON BEACH
87' x 240' Hi-Gloss Concrete

COURTYARD
Finished Concrete

ROLL-UP ENTRY DOOR:

COSTA MESA - 14' 6" x 14'

ROLLING GATE WIDTH:
SANTA ANA PAVILION - 15' 6"

ROLL-UP ENTRY DOOR:

HUNTINGTON BEACH - 17' 6" x 15' 6"

BOOTH SPACES (10' X 10'):

COSTA MESA

SANTA ANA PAVILION

HUNTINGTON BEACH

THE COURTYARD

Options available, inquire for details.

ASSEMBLY*:

COSTA MESA

Standing Space: 6,805

Seated Space: 4,860

SANTA ANA PAVILION

Standing Space: 3,265

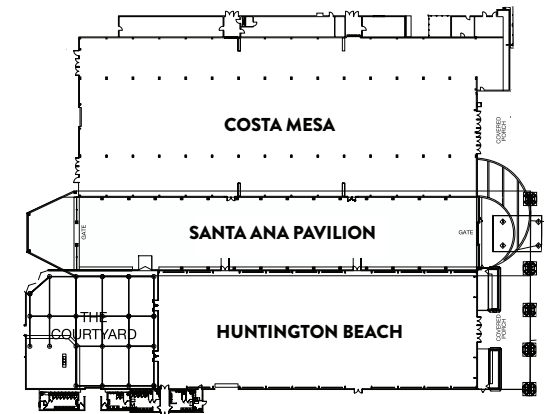
Seated Space: 2,332

HUNTINGTON BEACH

Standing Space: 3,914

Seated Space: 2,796

*Pending Fire Marshal approval.



CEILING HEIGHT:

COSTA MESA - 16' 3" to 30' 10"

SANTA ANA PAVILION - 22' 4" to 25' 9"

HUNTINGTON BEACH - 15' to 17' 5"

THE COURTYARD - 19' x 10'

TRADESHOW / BANQUET CAPACITY*:

COSTA MESA - 2,268

SANTA ANA PAVILION - 1,088

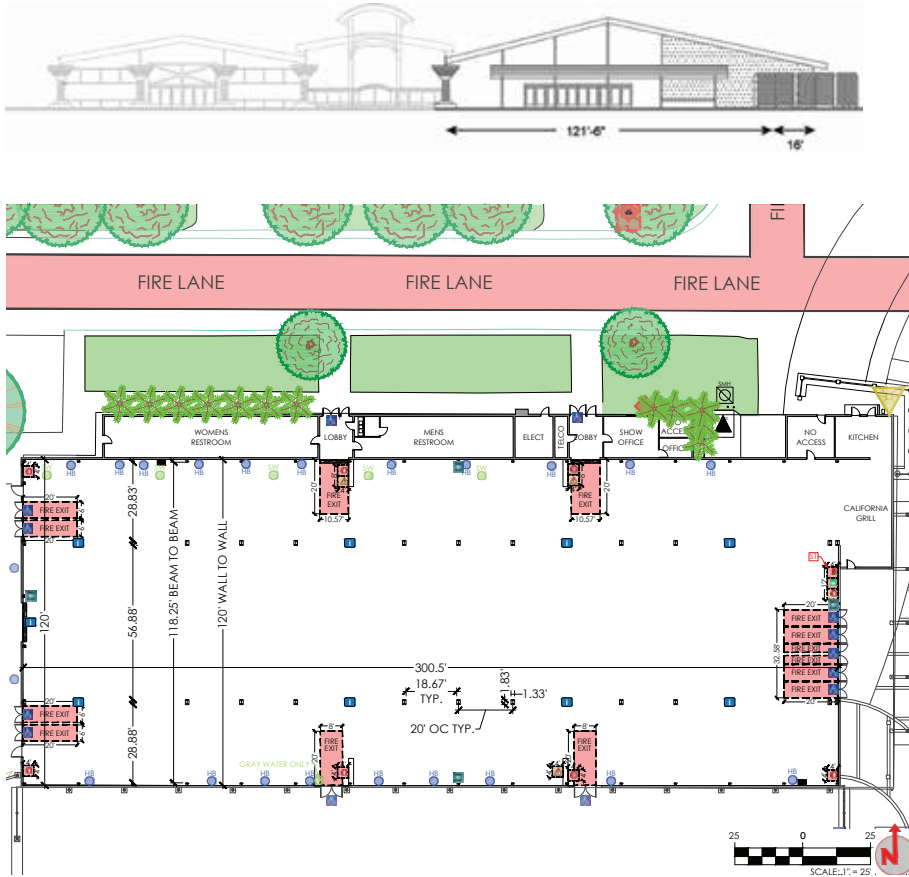
HUNTINGTON BEACH - 1,304

THE COURTYARD - 00

TOTAL - 4,660

*Pending Fire Marshal approval.

COSTA MESA BUILDING



34,025 Square Feet

Floor: 120' x 300' Hi-Gloss Concrete

Ceiling Height: 16' 3" to 30' 10"

Rolling Entry Door: 14' 6" x 14'

Climate Control: Y

Covered: Y

Tradeshow / Banquet Capacity: 2,268

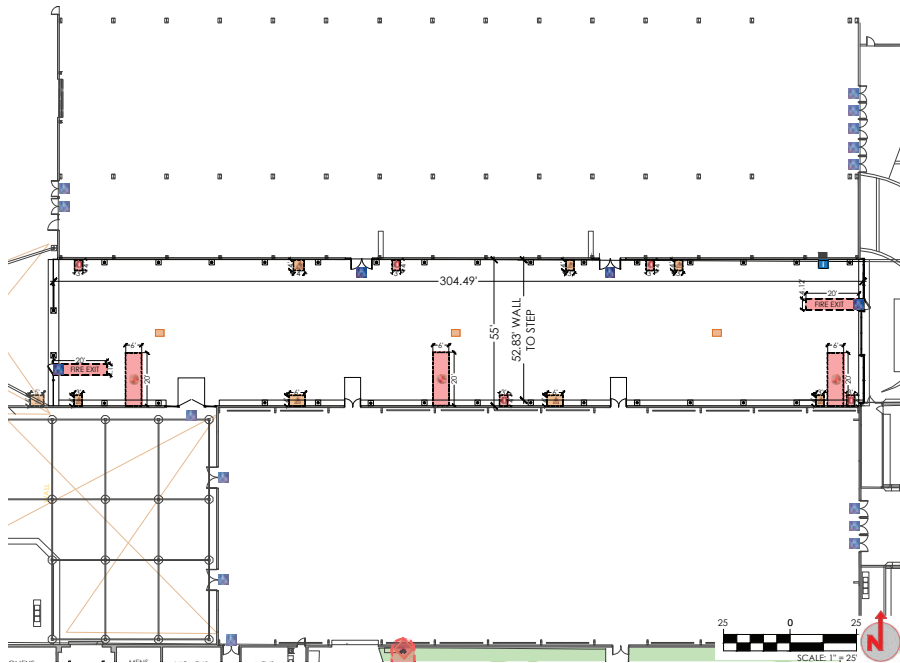
Assembly

Standing Space: 6,805

Seated Space: 4,860



SANTA ANA PAVILION



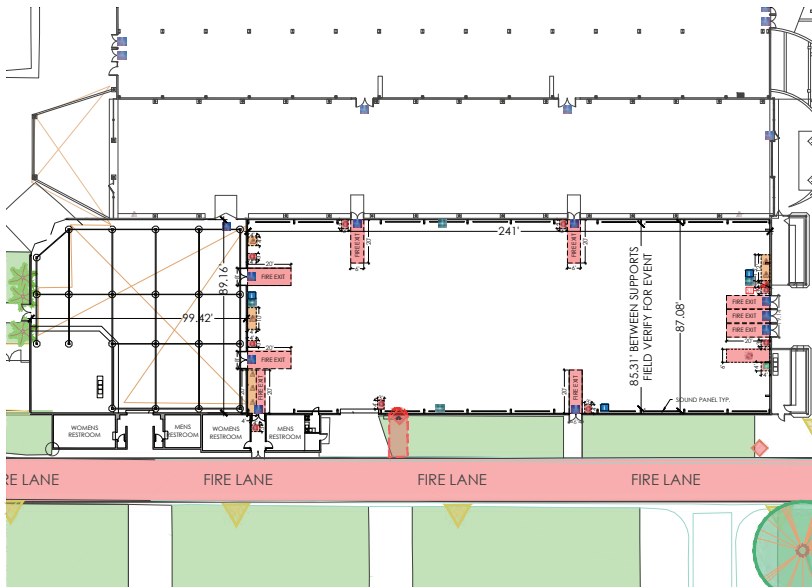
16,325 Square Feet

Floor: 55' x 305' Concrete
Ceiling Height: 22' 4" to 25' 9"
Rolling Gate Width: 15' 6"
Climate Control: N
Covered: Y

Tradeshow / Banquet Capacity: 1,088
Assembly
 Standing Space: 3,265
 Seated Space: 2,332



HUNTINGTON BEACH BUILDING



19,572 Square Feet

Floor: 87' x 240' Hi-Gloss Concrete

Ceiling Height: 15' to 17' 5"

Rolling Entry Door: 17' 6" x 15' 6"

Climate Control: Y

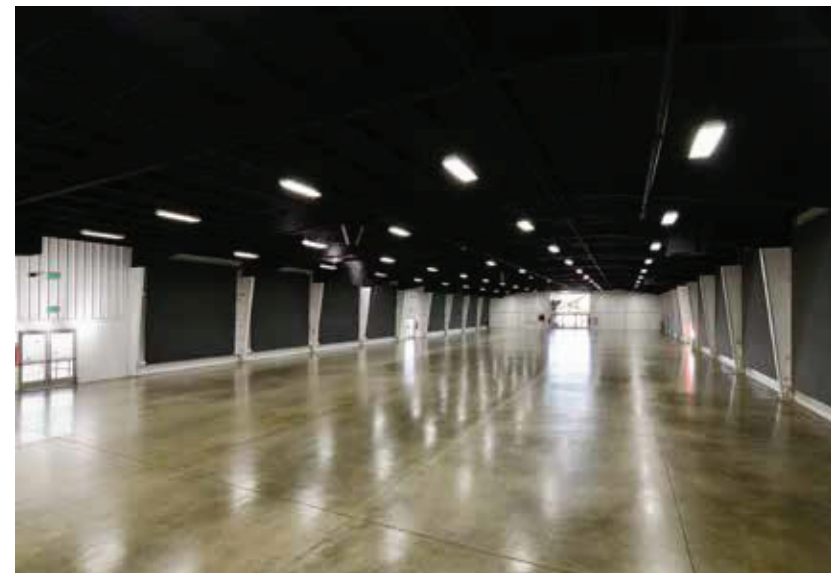
Covered: Y

Tradeshow / Banquet Capacity: 1,304

Assembly

Standing Space: 3,914

Seated Space: 2,796



OVERVIEW



EAST MAIN MALL



ANAHEIM
12,636 Square Feet
Climate-Controlled Exhibit Hall

OC PROMENADE
18,035 Square Feet
Outdoor Covered Space

LOS ALAMITOS
16,640 Square Feet
Climate-Controlled Exhibit Hall

TOTAL: 50,660 Square Feet

FLOOR:

ANAHEIM
70' x 201' Hi-Gloss Concrete

OC PROMENADE
94' x 199.5' Concrete

LOS ALAMITOS
86.5' x 200.9' Hi-Gloss Concrete

ROLL-UP ENTRY DOOR:
ANAHEIM - 12' X 14'

ROLLING GATE WIDTH:
OC PROMENADE - 16' 6"

ROLL-UP ENTRY DOOR:
LOS ALAMITOS - 12' x 14'

BOOTH SPACES (10' X 10'):
ANAHEIM
OC PROMENADE
LOS ALAMITOS

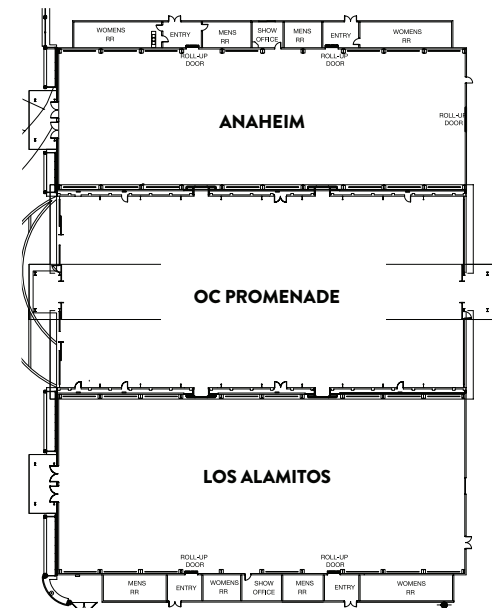
Options available, inquire for details.

ASSEMBLY*:

ANAHEIM
Standing Space: 2,527
Seated Space: 1,805

OC PROMENADE
Standing Space: 3,607
Seated Space: 2,576

LOS ALAMITOS
Standing Space: 3,292
Seated Space: 2,351



CEILING HEIGHT:

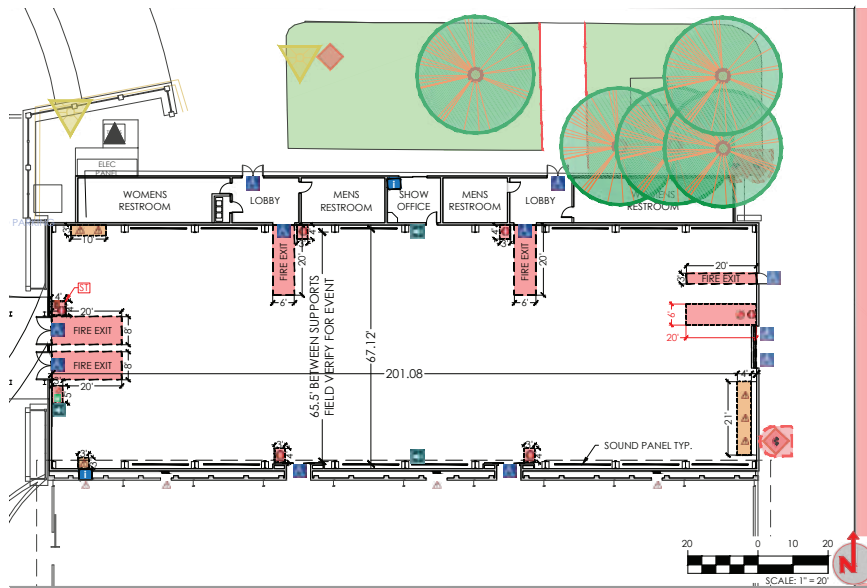
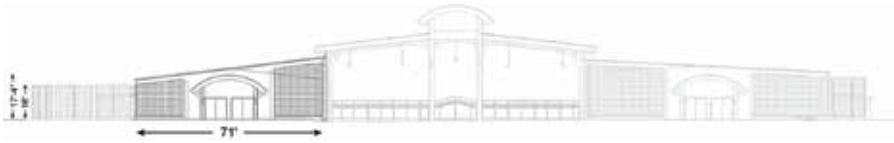
ANAHEIM - 16' to 17' 4"
OC PROMENADE - 24' - 30'
LOS ALAMITOS - 14' 10" to 17' 3"

TRADESHOW / BANQUET CAPACITY*:

ANAHEIM - 842
OC PROMENADE - 1,202
LOS ALAMITOS - 1,097
TOTAL - 3,141

*Pending Fire Marshal approval.

ANAHEIM BUILDING



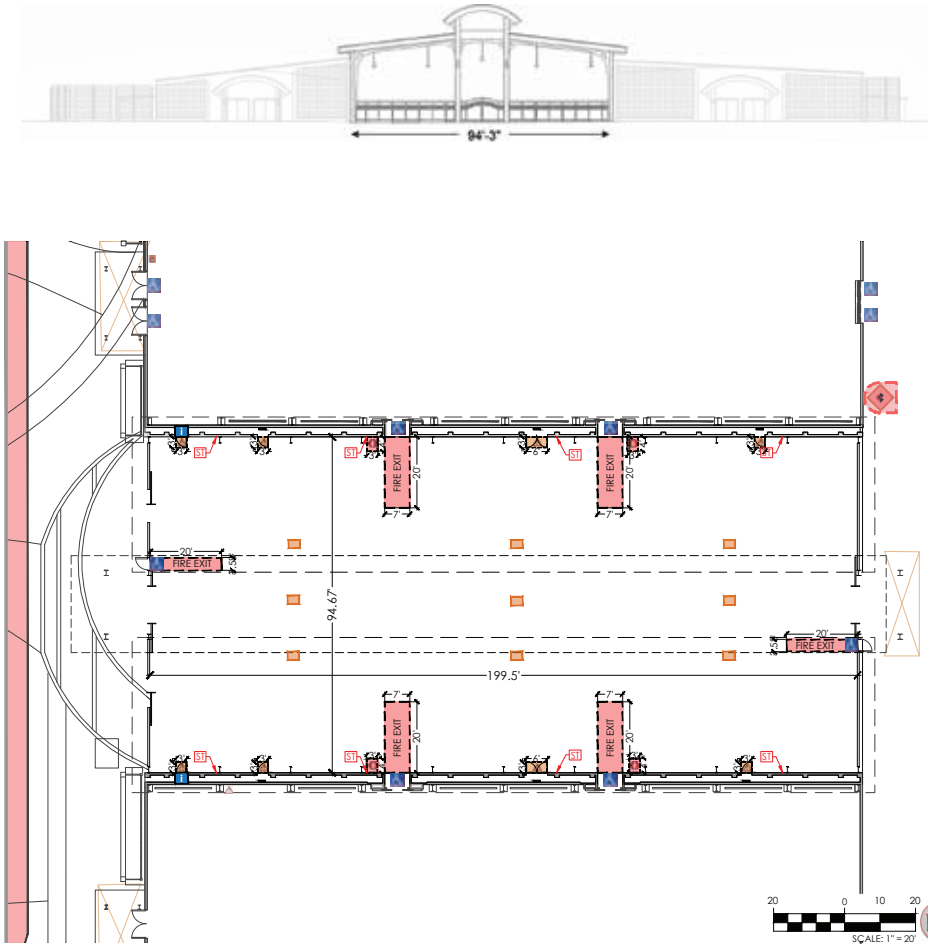
12,636 Square Feet

Floor: 70' x 201' Hi-Gloss Concrete
Ceiling Height: 16' to 17' 4"
Roll-Up Entry Door: 12' x 14'
Climate Control: Y
Covered: Y

Tradeshow / Banquet Capacity: 842
Assembly
 Standing Space: 2,527
 Seated Space: 1,805



OC PROMENADE



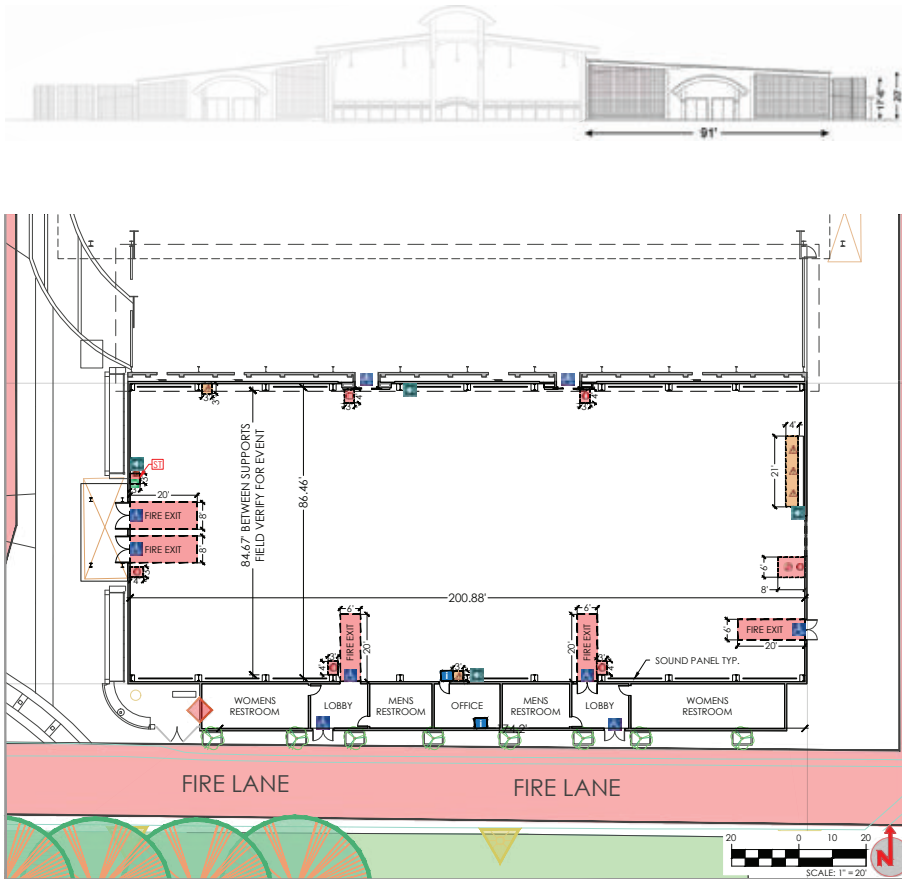
18,035 Square Feet

Floor: 94' x 199.5' Concrete
Ceiling Height: 24' - 30'
Rolling Gate: 16' x 6"
Climate Control: N
Climate Control: Y

Tradeshow / Banquet Capacity: 1,202
Assembly
 Standing Space: 3,607
 Seated Space: 2,576



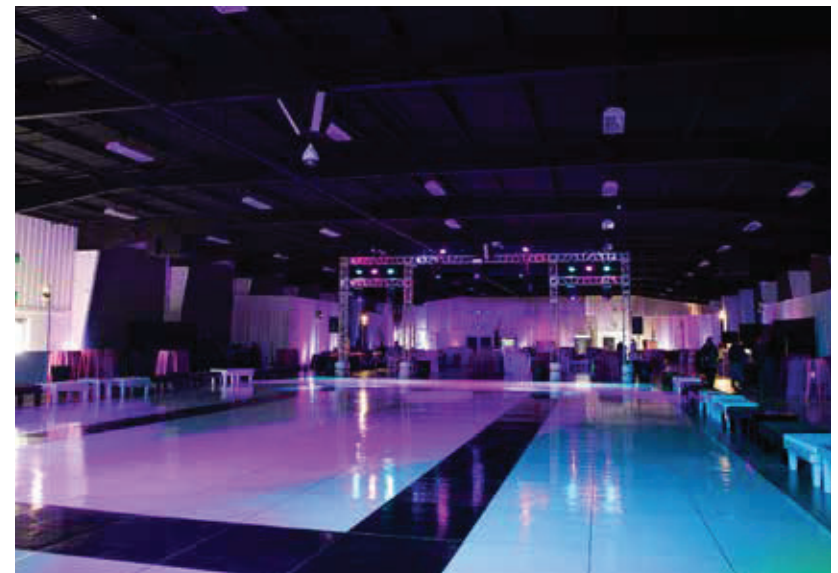
LOS ALAMITOS BUILDING



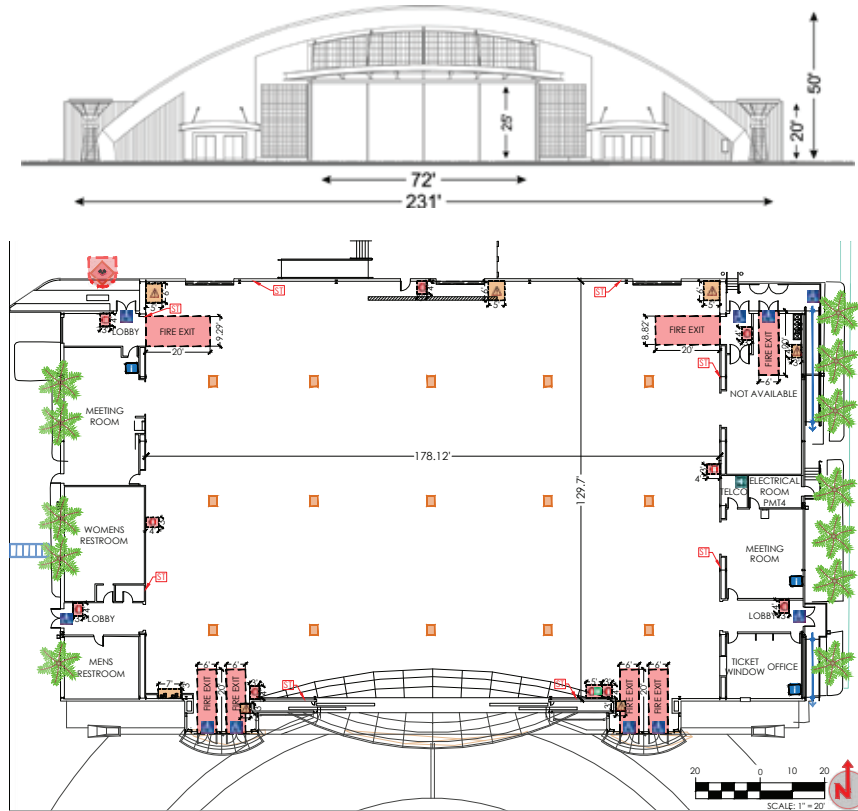
16,640 Square Feet

Floor: 86.5' x 200.9' Hi-Gloss Concrete
Ceiling Height: 14' 10" to 17' 3"
Roll-Up Entry Door: 12' x 14"
Climate Control: Y
Covered: Y

Banquet Table/Chairs: 1,097
Assembly
Standing Space: 3,292
Seated Space: 2,351



THE HANGAR



22,245 Square Feet

Floor: 129' x 178' Hi-Gloss Concrete

Ceiling Height: 15' to 43'

Rolling Entry Door: 72'

Climate Control: Y

Covered: Y

Tradeshow / Banquet Capacity: 1,483

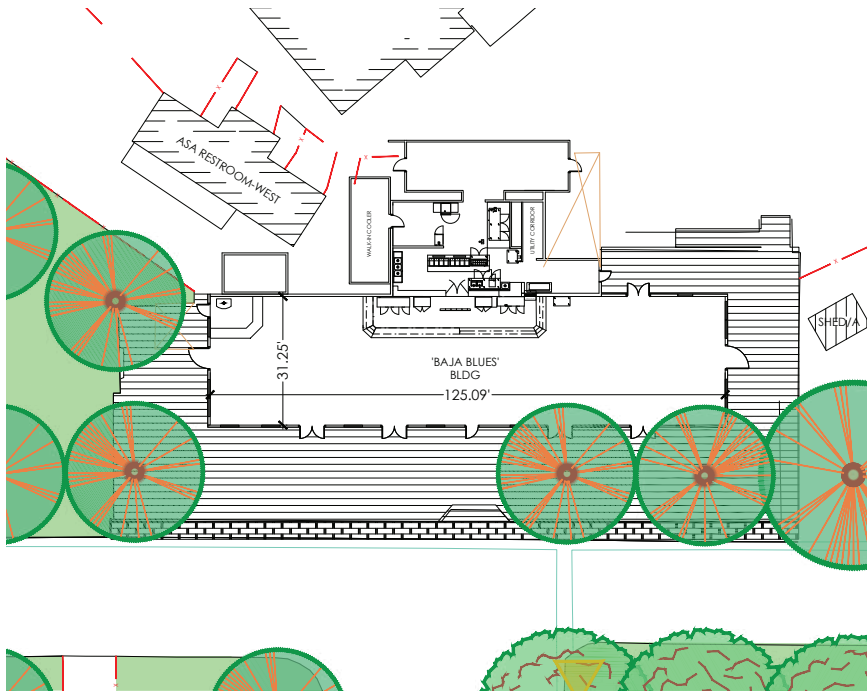
Assembly

Standing Space: 4,449

Seated Space: 3,177



BAJA BLUES BAR & RESTAURANT



9,200 Square Feet

3,900 Square Feet (Interior) 5,300 Square Feet (Exterior)

Climate Control: Y

Covered: Y

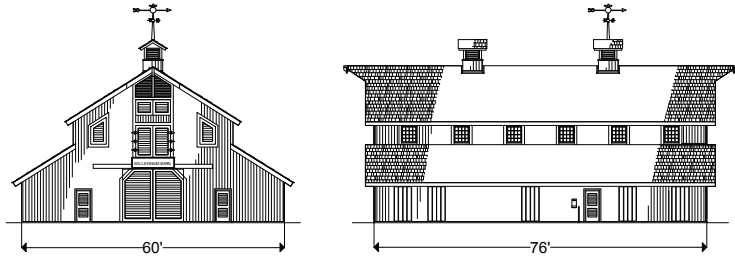
Assembly: 240

Capacity (Interior): 120

Capacity (Exterior): 120



MILLENNIUM BARN



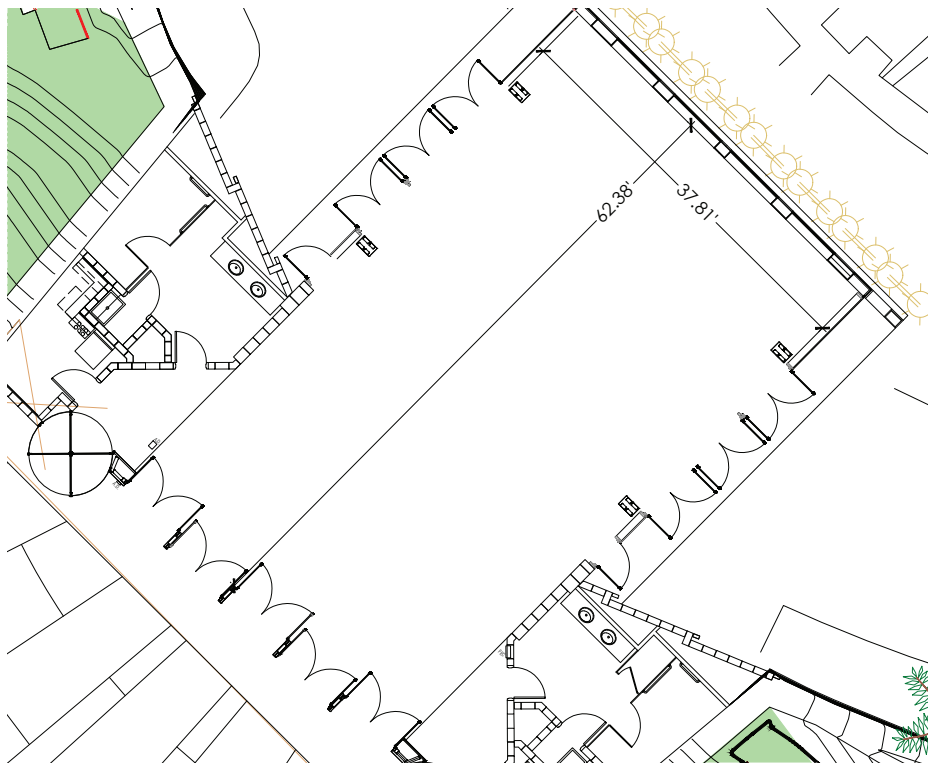
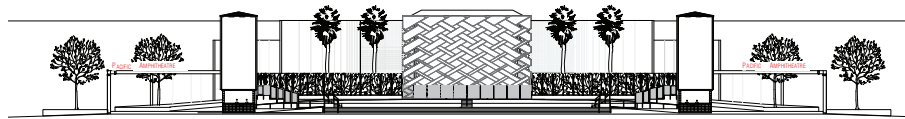
4,413 Square Feet

Climate Control: N

Covered: Y



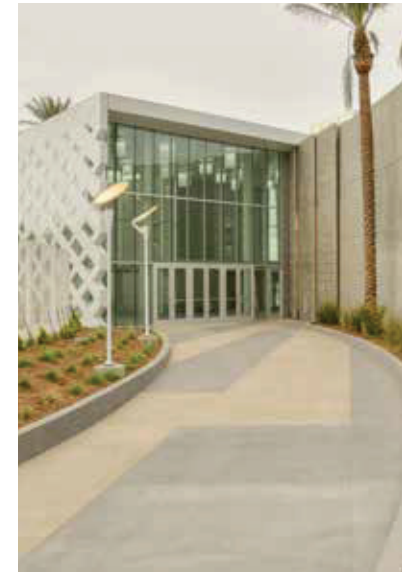
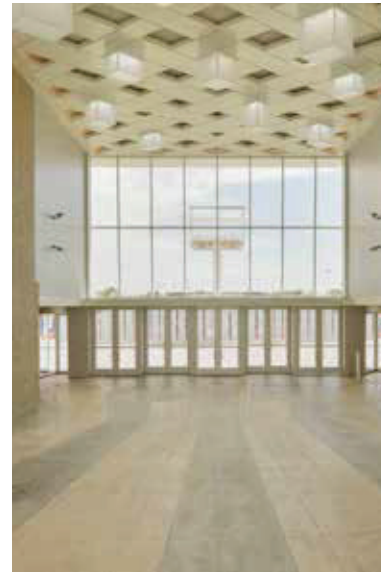
PLAZA PACIFICA LOBBY



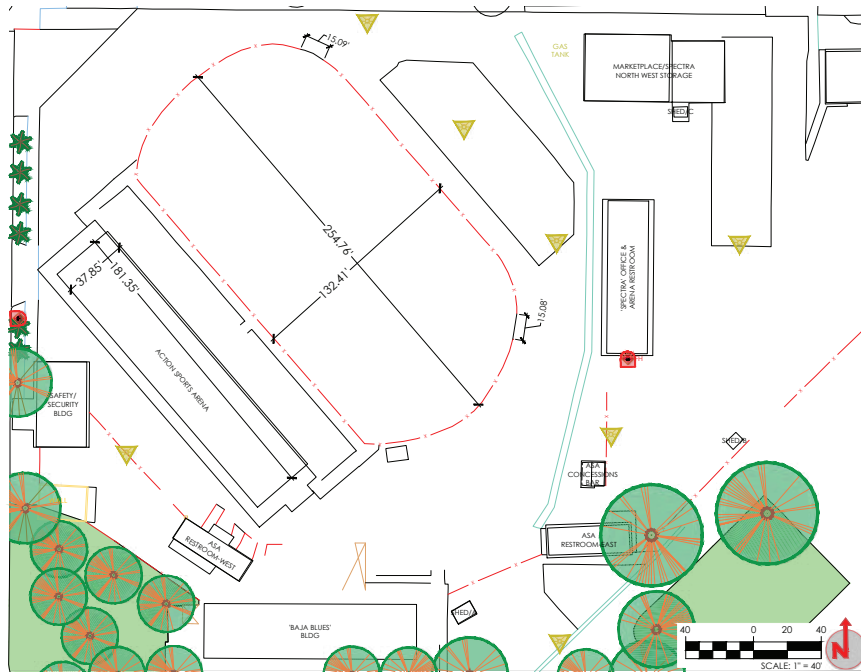
2,400 Square Feet

Climate Control: N

Covered: Y



ACTION SPORTS ARENA



48,023 Square Feet

Building Dimensions:

East to West 37.85'
 North to South 181.35'
 Total sq. ft. 6,978

Seats: 1,888

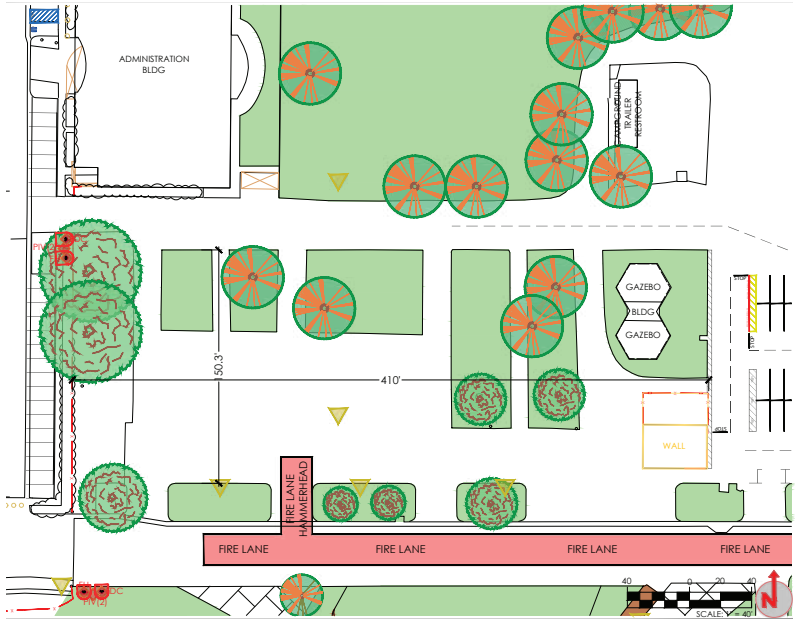
ADA Seats: 164

Track Dimensions:

East to West 132.41'
 North to South 254.76'
 Total sq. ft. 30,960



CAMPGROUND

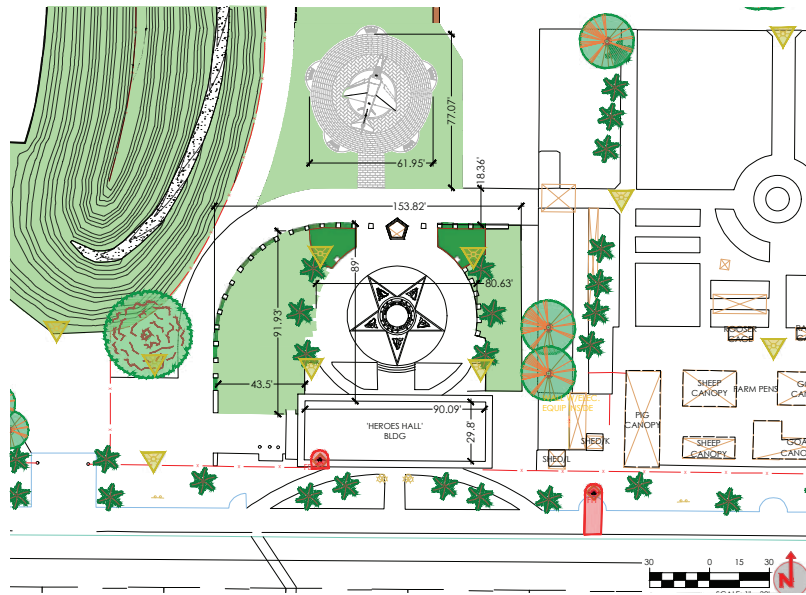


62,349 Square Feet

Lot Dimensions:
East to West 410'
North to South 150.3'



HEROES HALL COURTYARD



5,506 Square Feet

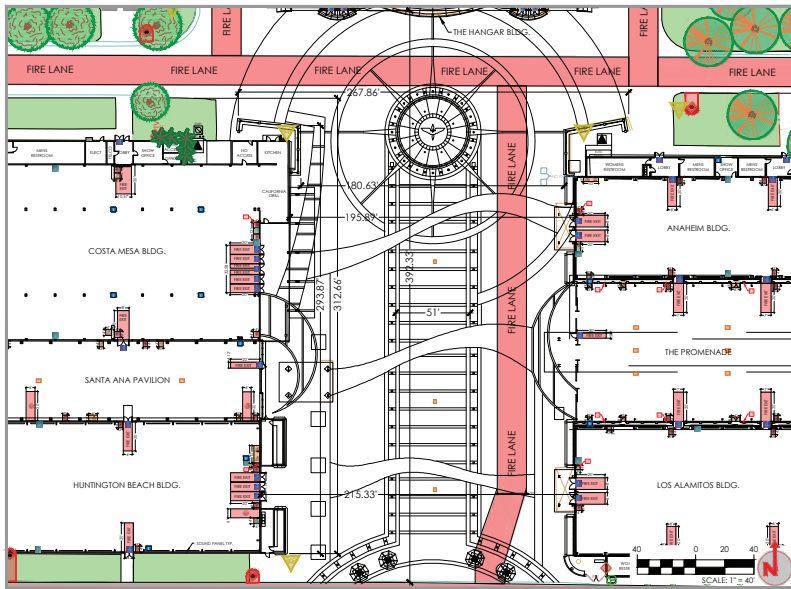
Building Dimensions:

East to West 90.09'

North to South 29.8'



MAIN MALL



77,813 Square Feet

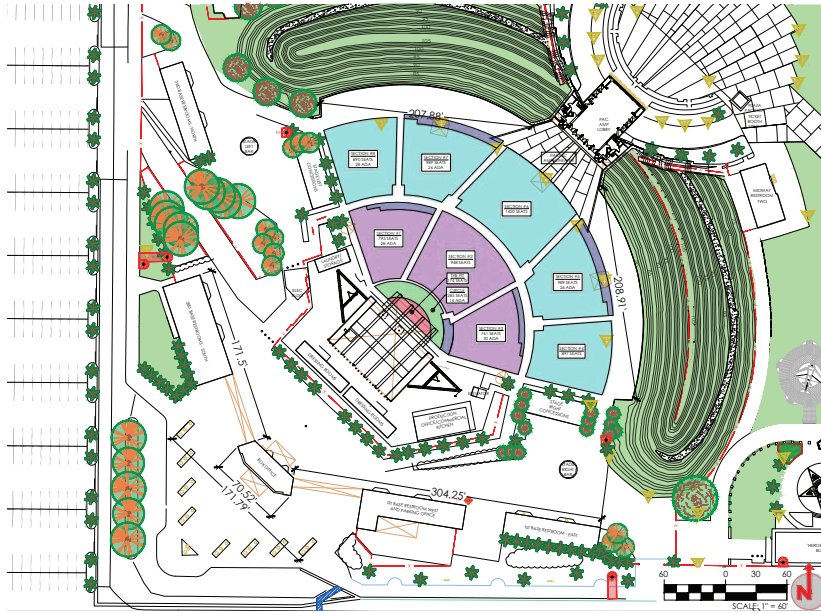
Lot Dimensions:

East to West 215.33'

North to South 392.33'



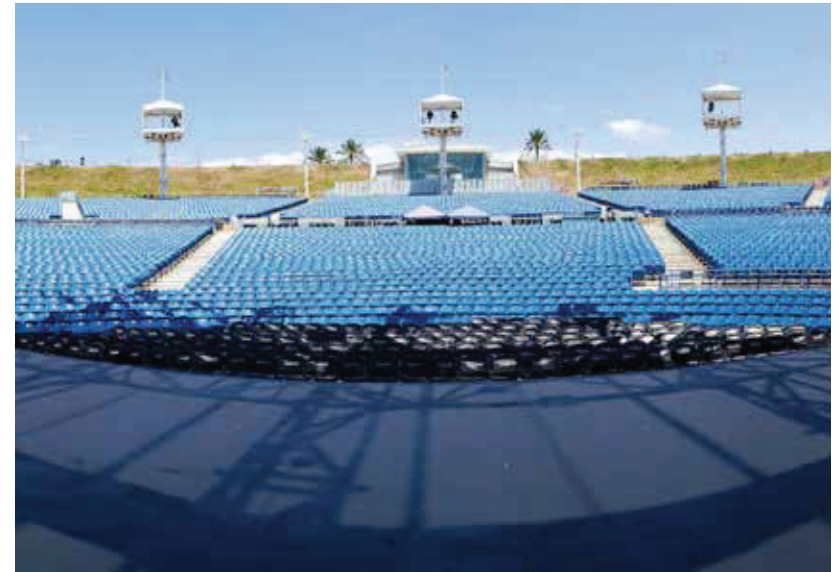
PACIFIC AMPHITHEATRE



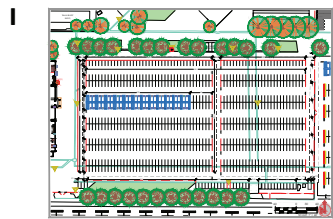
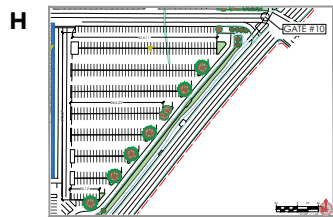
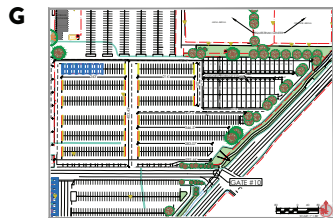
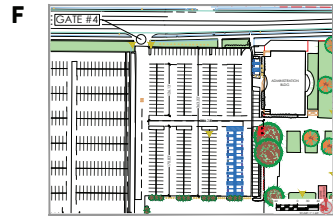
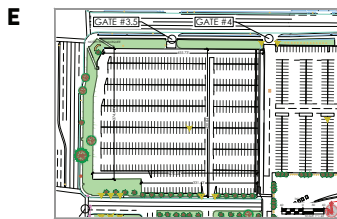
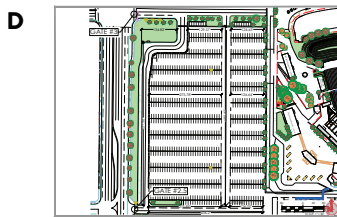
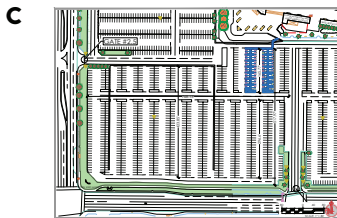
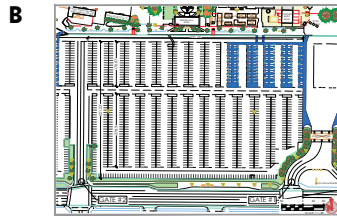
150,091 Square Feet

Seats: 8,233

ADA Seats: 127



PARKING LOTS



Lot B 417,088 sq. ft.

Lot C 398,554 sq. ft.

Lot D 337,192 sq. ft.

Lot E 188,680 sq. ft.

Lot F 98,377 sq. ft.

Lot G 332,708 sq. ft.

Lot H 153,124 sq. ft.

Lot I 276,235 sq. ft.

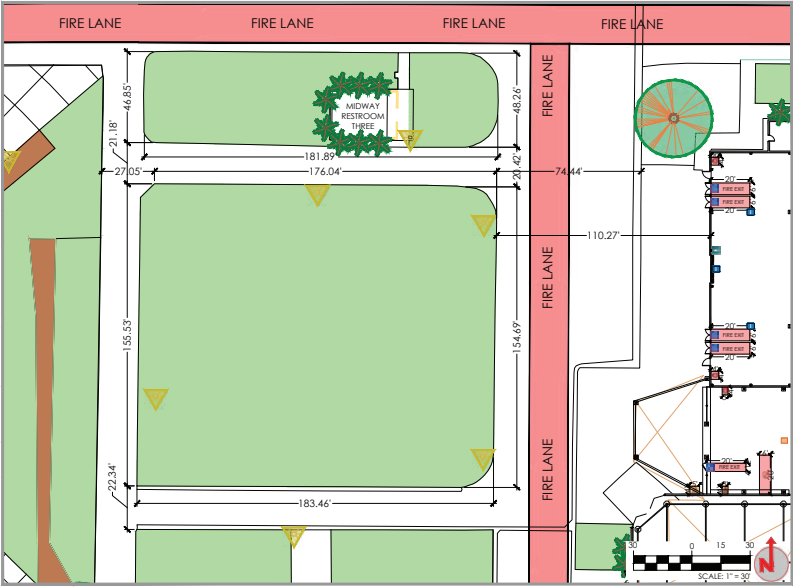


Lot I



Lot C

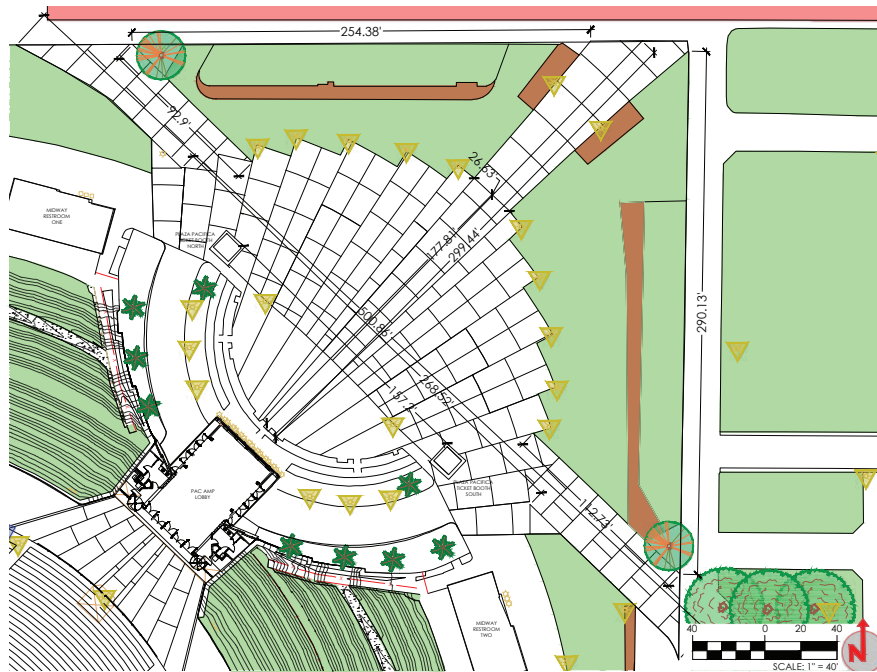
PARK PLAZA



28,307 Square Feet

Lot Dimensions:
East to West 176.04'
North to South 155.53'

PLAZA PACIFICA



81,247 Square Feet

Lot Dimensions:

N.W. to S.E. 500.86'

S.W. to N.E. 299.44'





88 Fair Drive
Costa Mesa, CA 92626

sales@ocfair.com

ocfair.com